

2020



*Mojave Series*

*Homes*  
Single Section



*Luxury and Comfort for Less*

**Adventure Homes of Indiana**

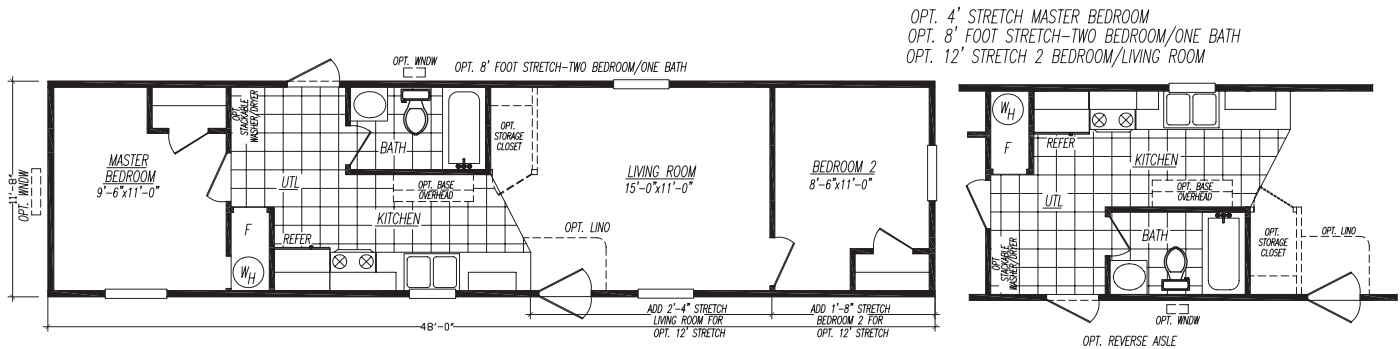
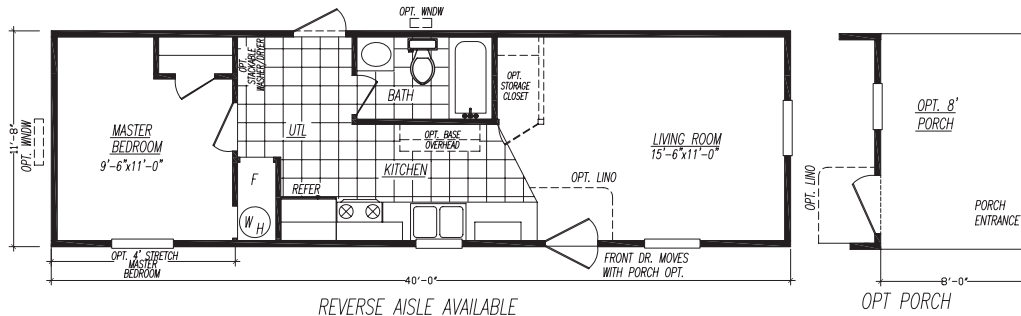
*Your adventure begins here.*



Welcome to Adventure Homes. We offer you the best value in manufactured housing. Our homes have unbelievable eye appeal, product standards, and the flexibility you need with every home we build. Additionally, we offer award winning sales, service and production teams to enhance your value even more. We look forward to assisting you and welcoming you into our family of satisfied retailers and customers!

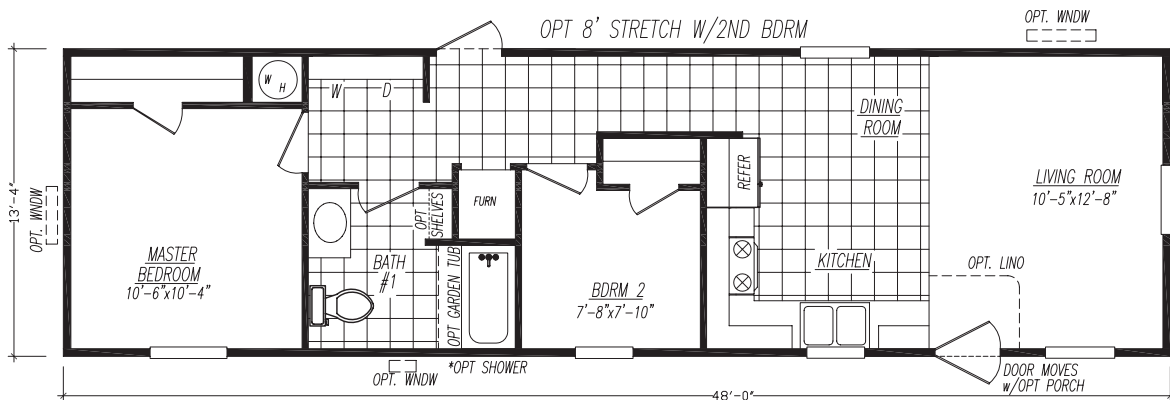
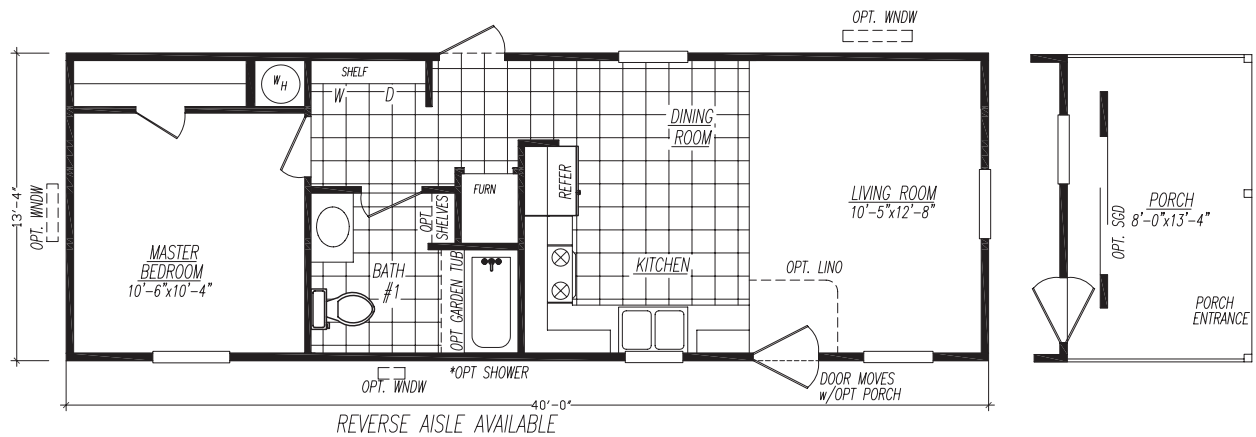
## The Lincoln

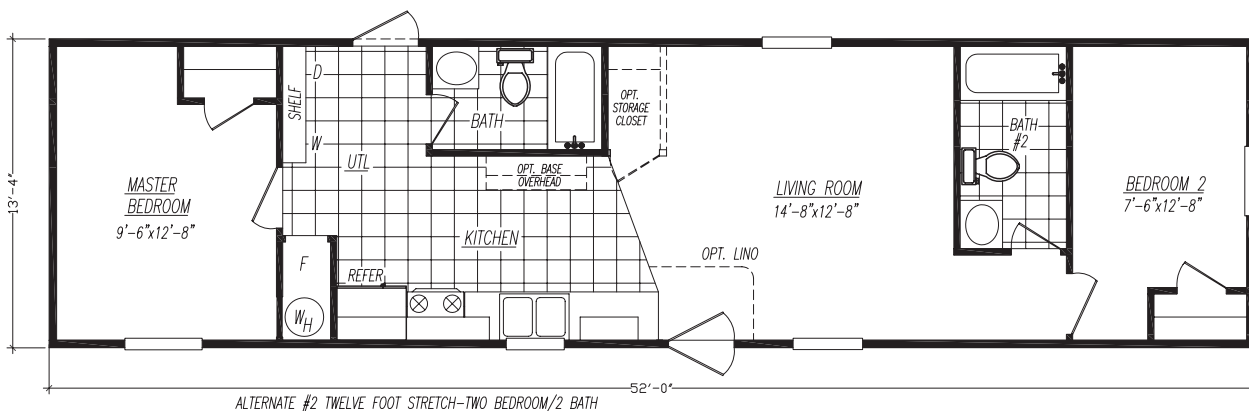
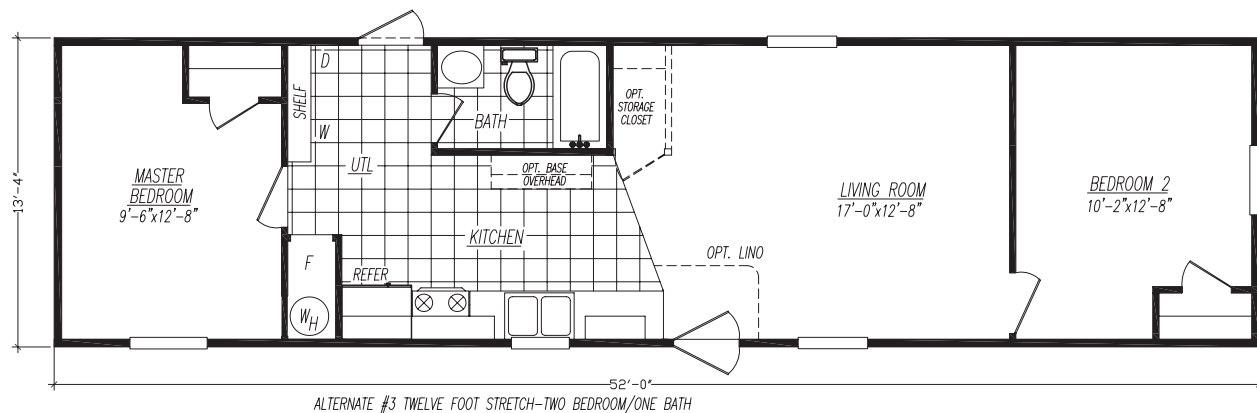
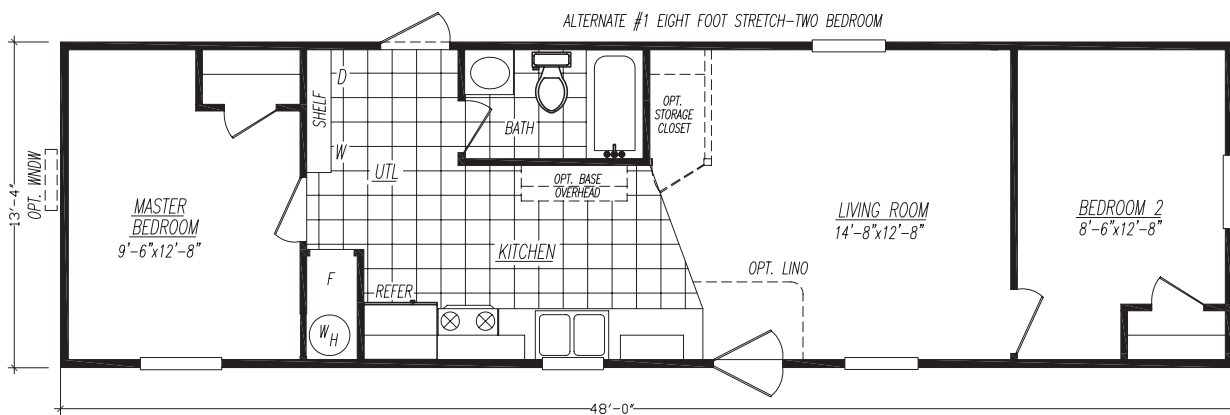
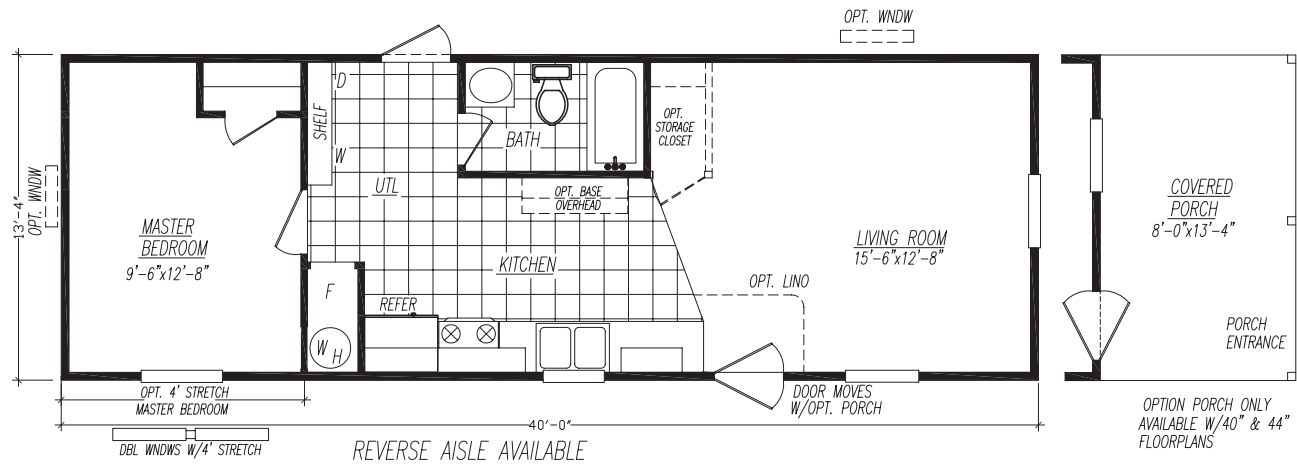
Model 1401S • 1 Bedroom • 1 Bath • Floor Size 467 sq. ft.



## The Vantage

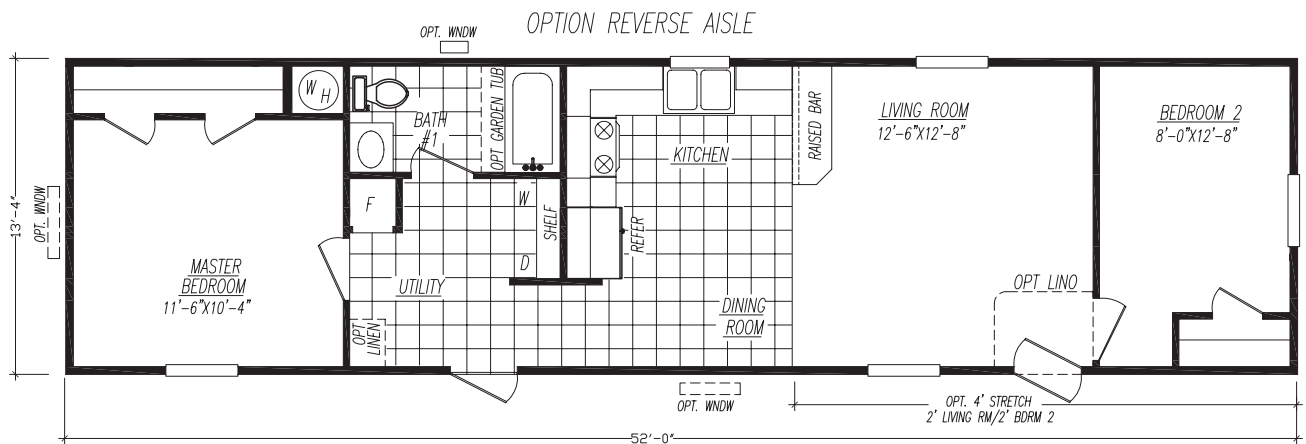
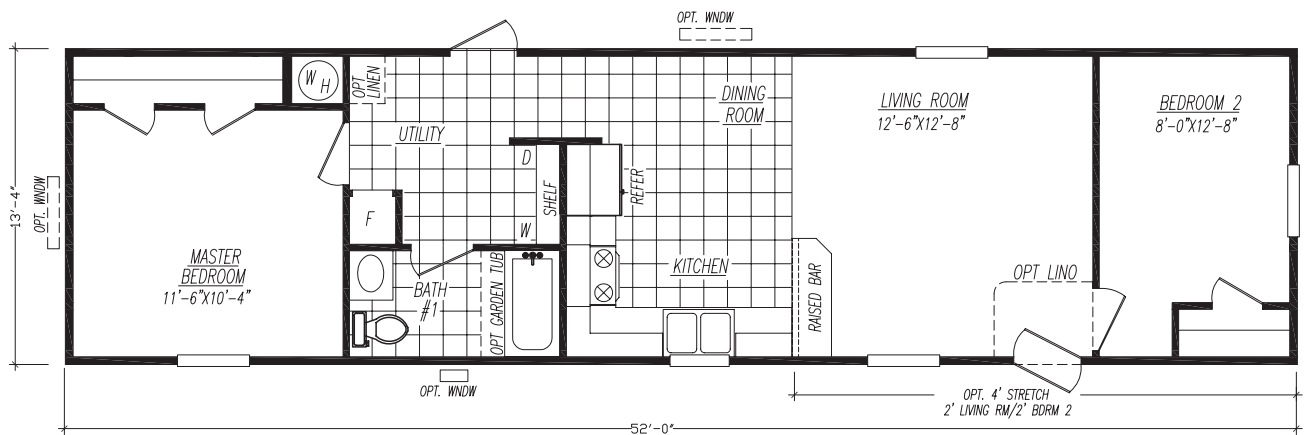
Model 2401-LL • 1 Bedroom • 1 Bath • Floor Size 533 sq. ft.





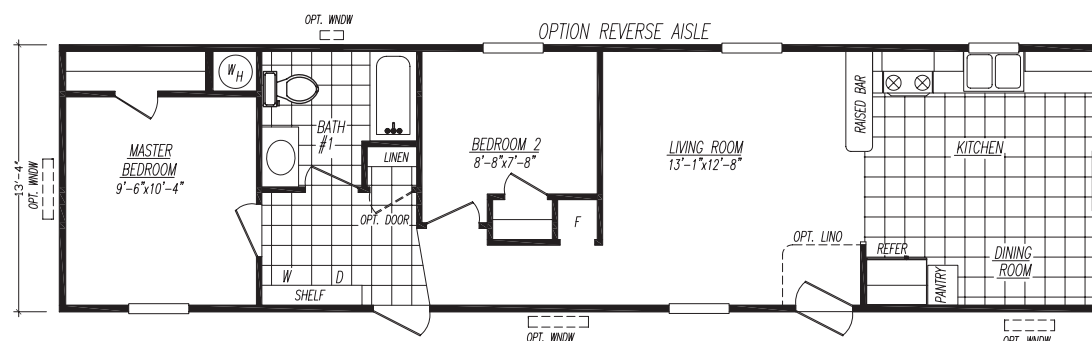
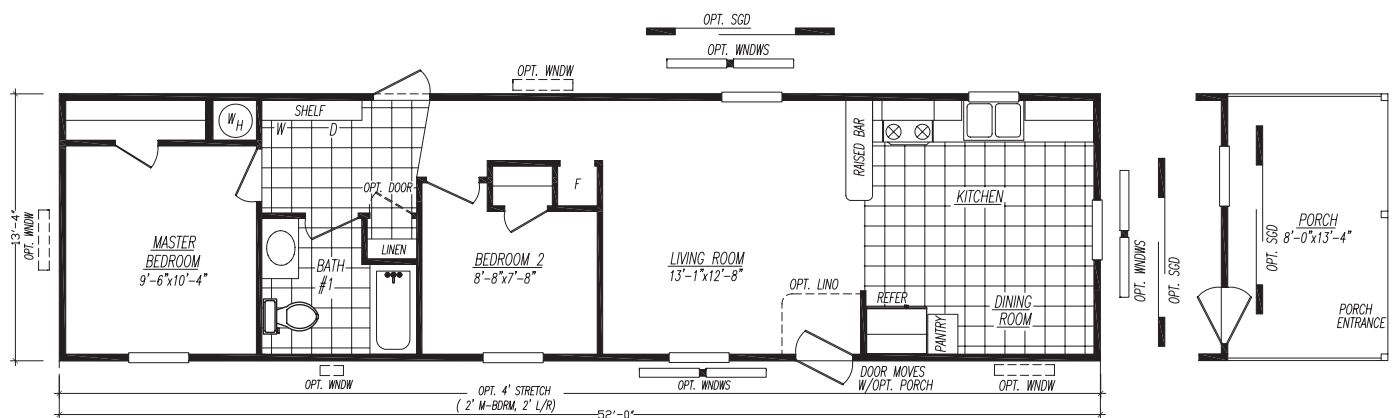
# The Sierra

Model 2522C • 2 Bedrooms • 1 Bath • Floor Size 693 sq. ft.



# The Northwest

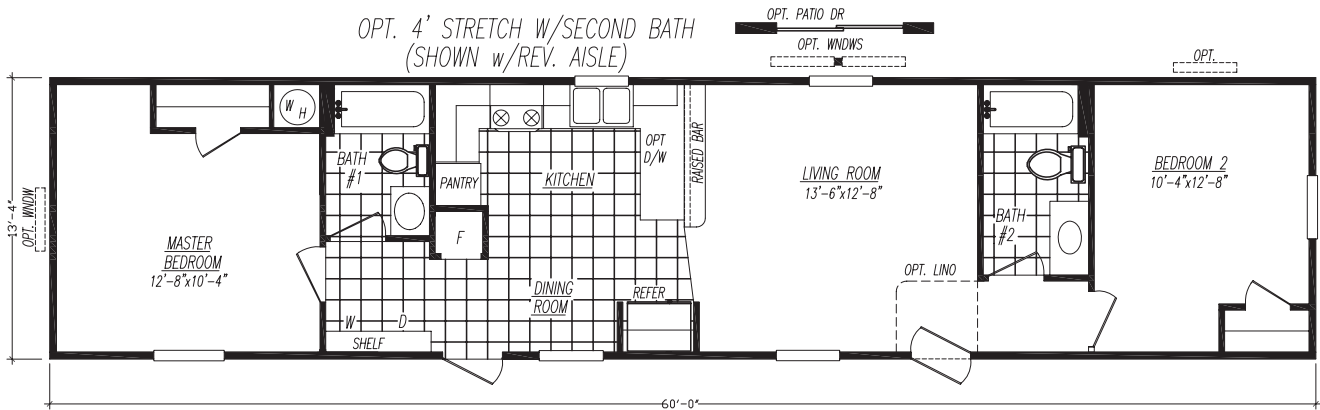
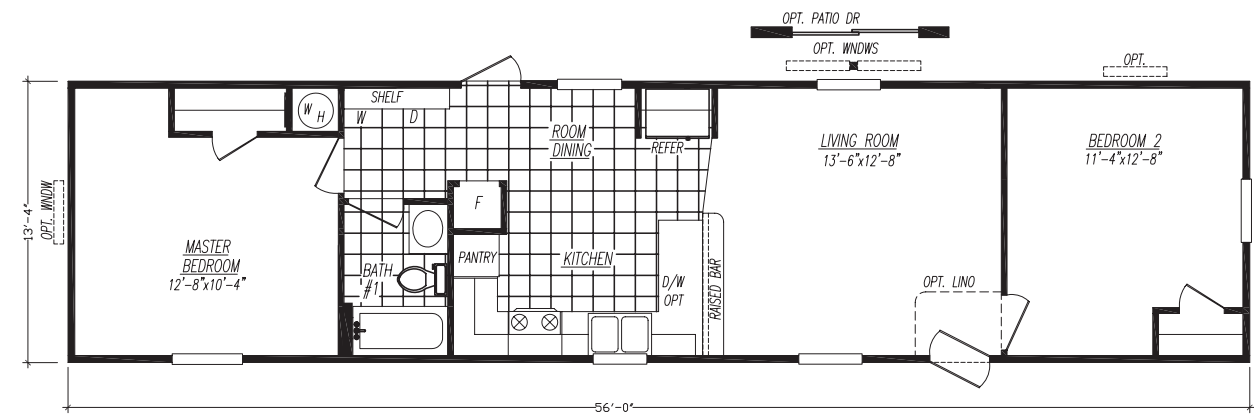
Model 2522W • 2 Bedrooms • 1 Bath • Floor Size 693 sq. ft.





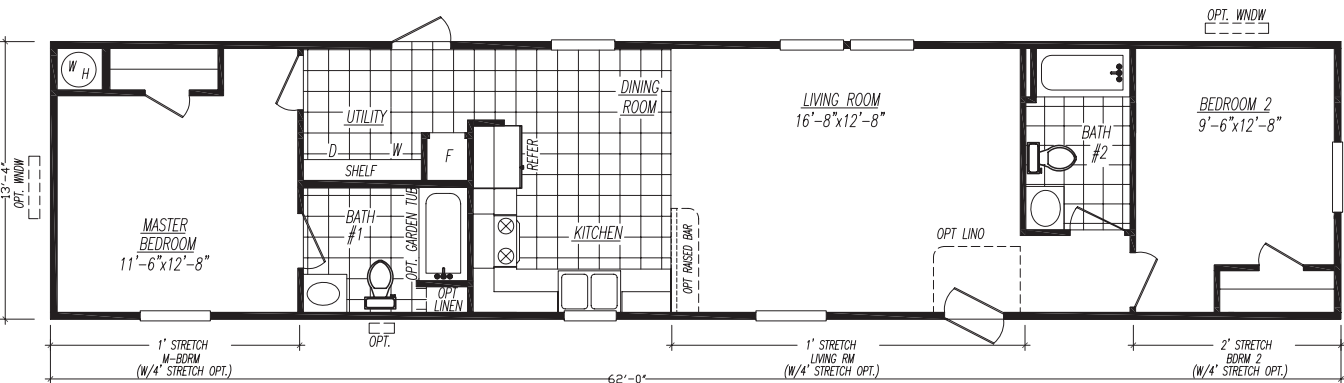
The Totem

Model 2562Z • 2 Bedrooms • 1 Bath • Floor Size 747 sq. ft.



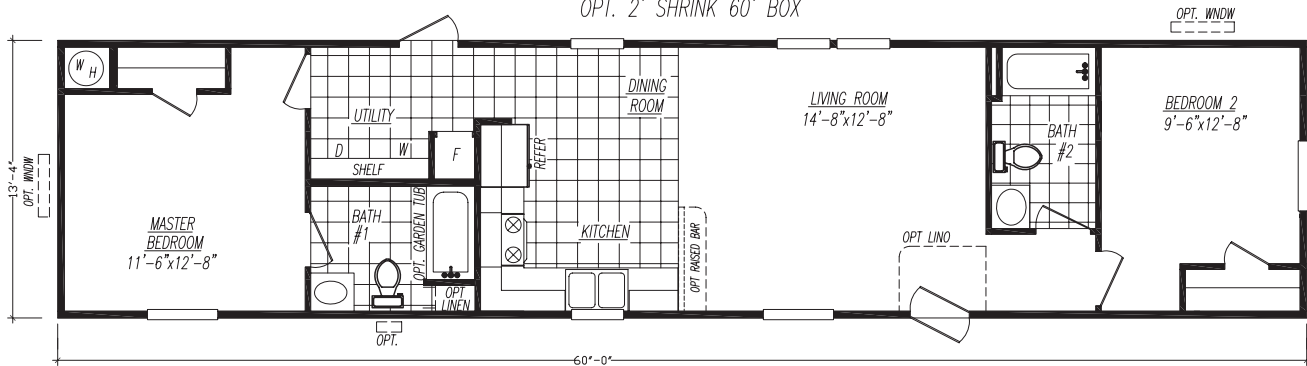
The Madison

Model 2622X • 2 Bedrooms • 2 Baths • Floor Size 827 sq. ft.



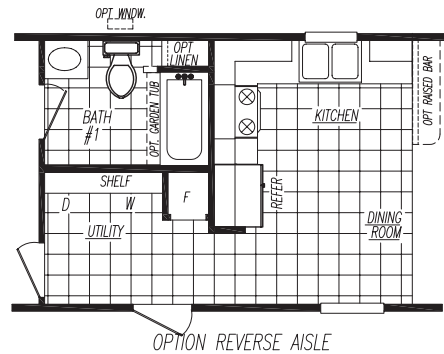
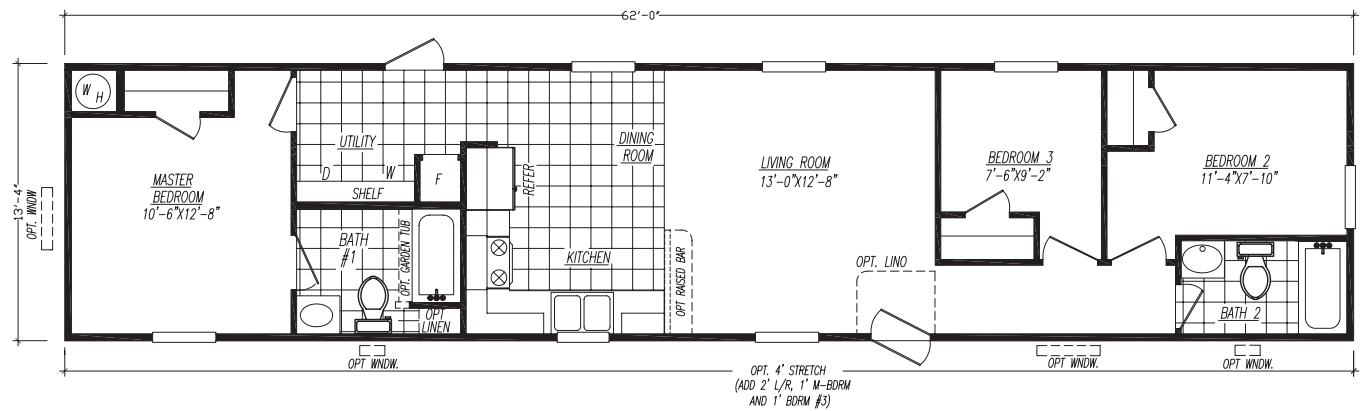
AVAILABLE WITH REVERSE AISLE

OPT. 2' SHRINK 60' BOX



# The *Prairie*

Model 2623X • 3 Bedrooms • 2 Baths • Floor Size 827 sq. ft.

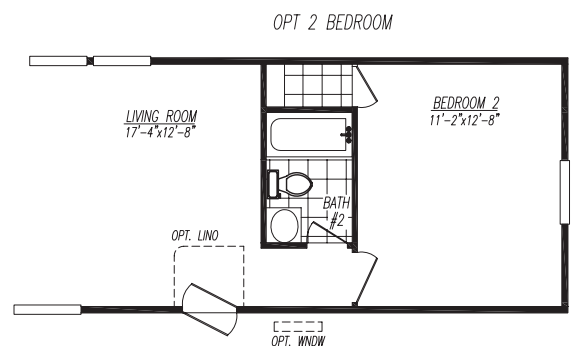
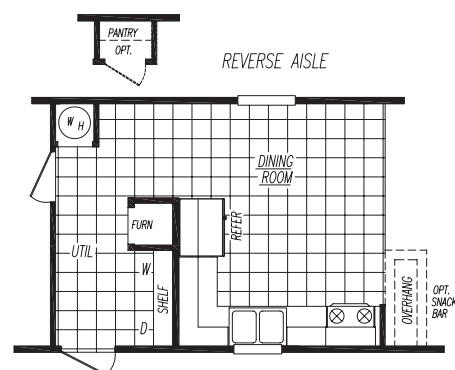
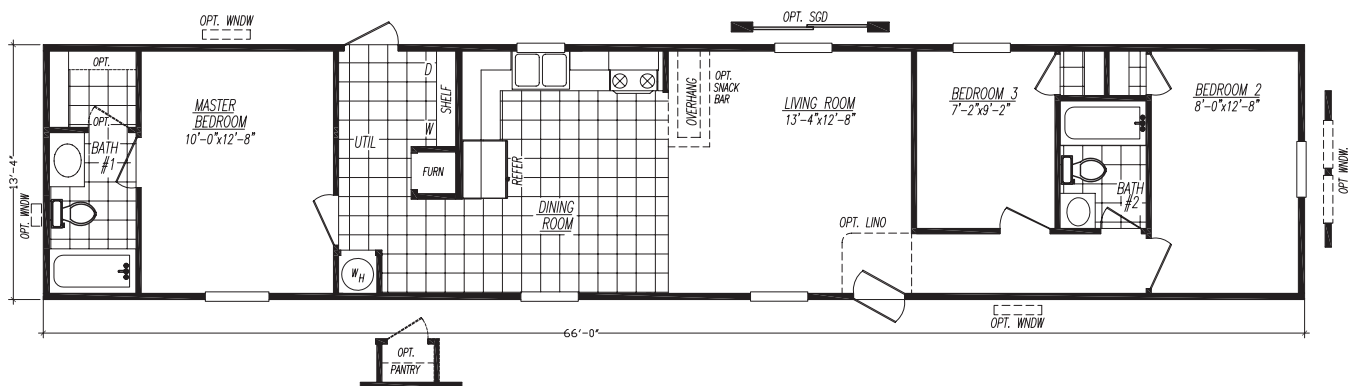


OPTION 2' SHRINK AVAILABLE  
(SUBTRACT 1' M-BRM & L/R W/SHRINK)



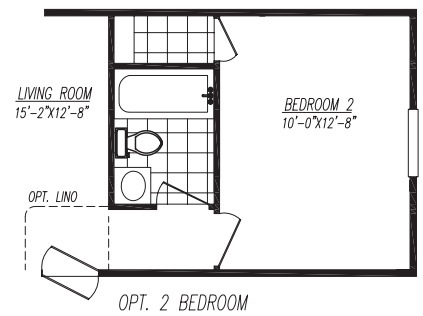
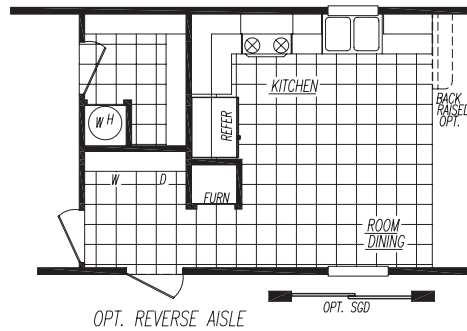
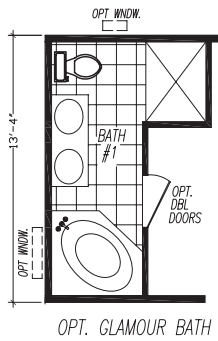
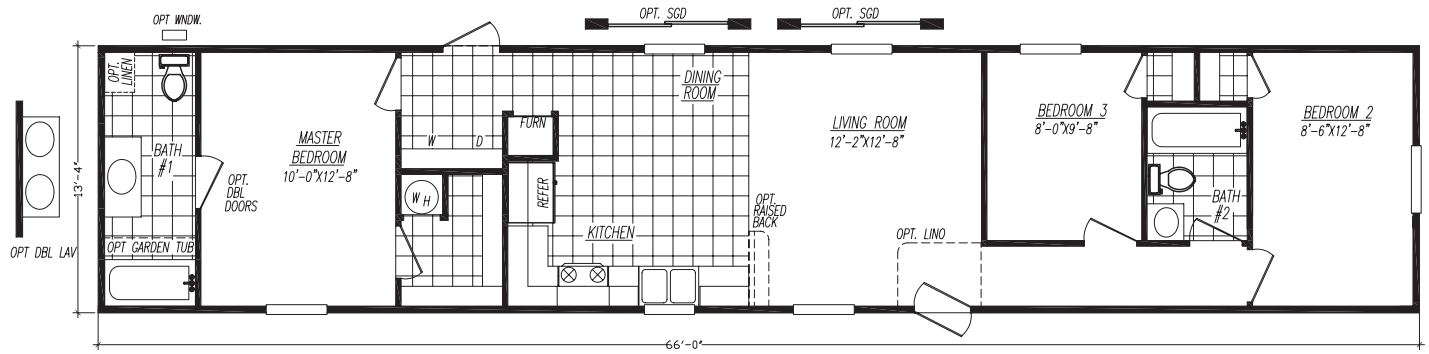
# The *Timberland*

Model 2663B • 3 Bedrooms • 2 Baths • Floor Size 880 sq. ft.



# The Morrison

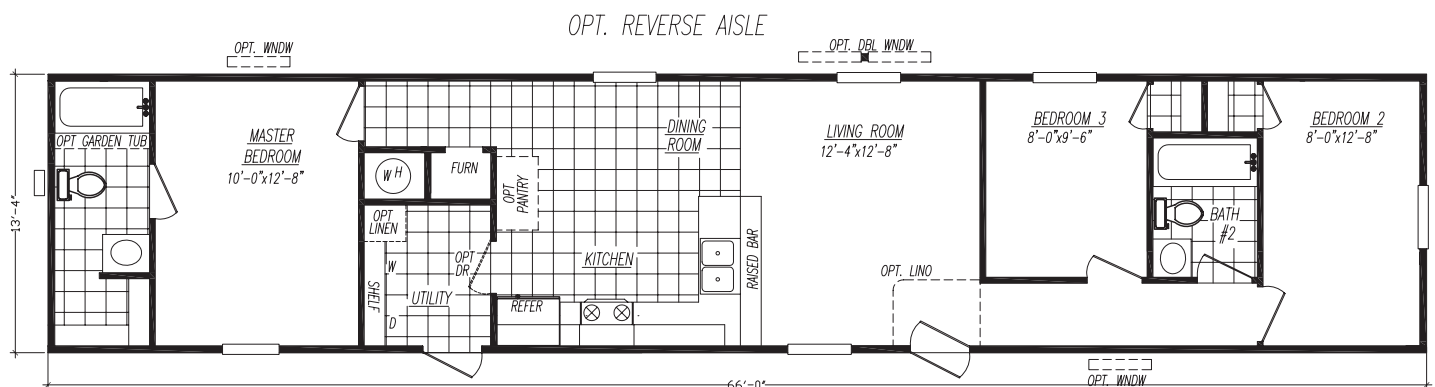
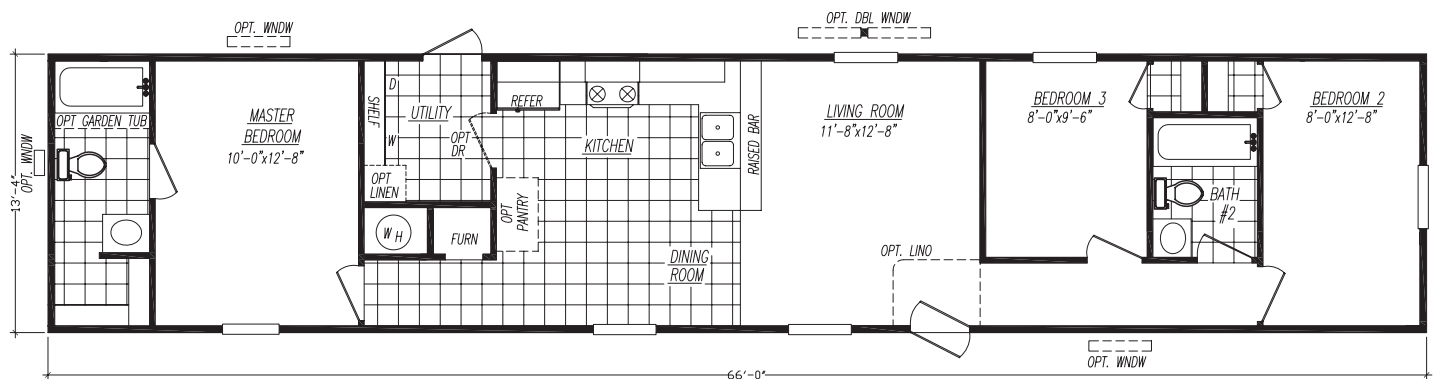
Model 2663F • 3 Bedrooms • 2 Baths • Floor Size 880 sq. ft.



7

# The Cottonwood

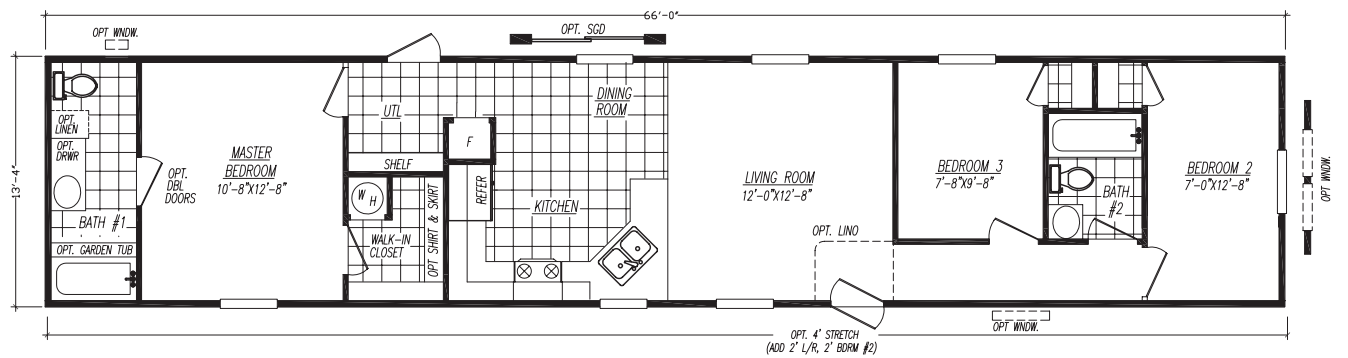
Model 2663G • 3 Bedrooms • 2 Baths • Floor Size 880 sq. ft.



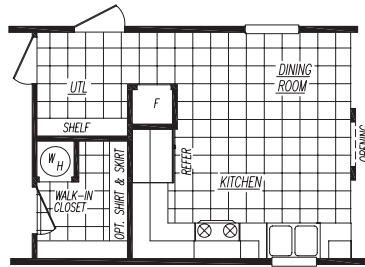
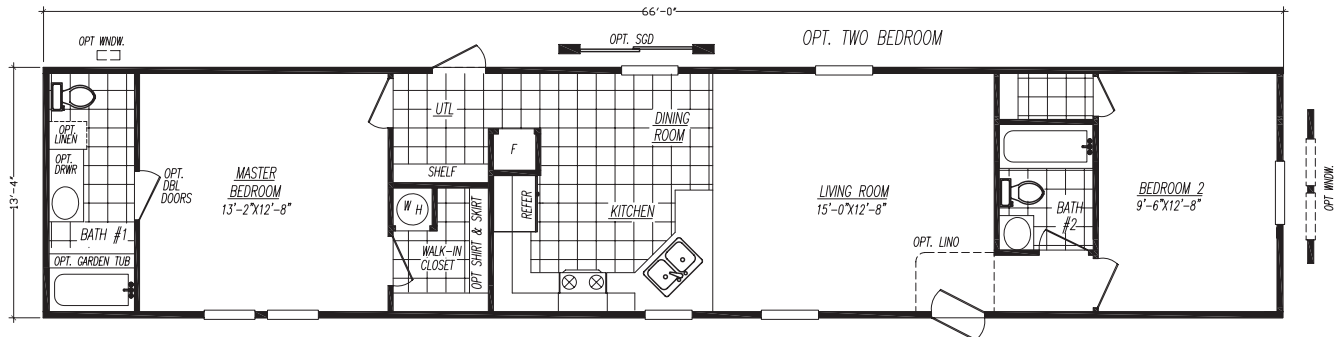


# The Telton

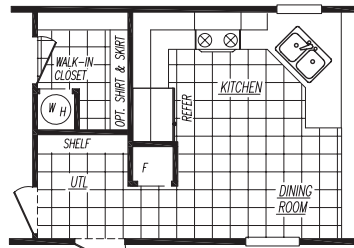
Model 2663W • 3 Bedrooms • 2 Baths • Floor Size 880 sq. ft.



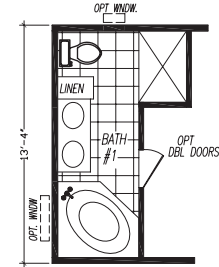
ALSO AVAILABLE W/REVERSE AISLE



ALTERNATE KITCHEN



OPT. REVERSE AISLE



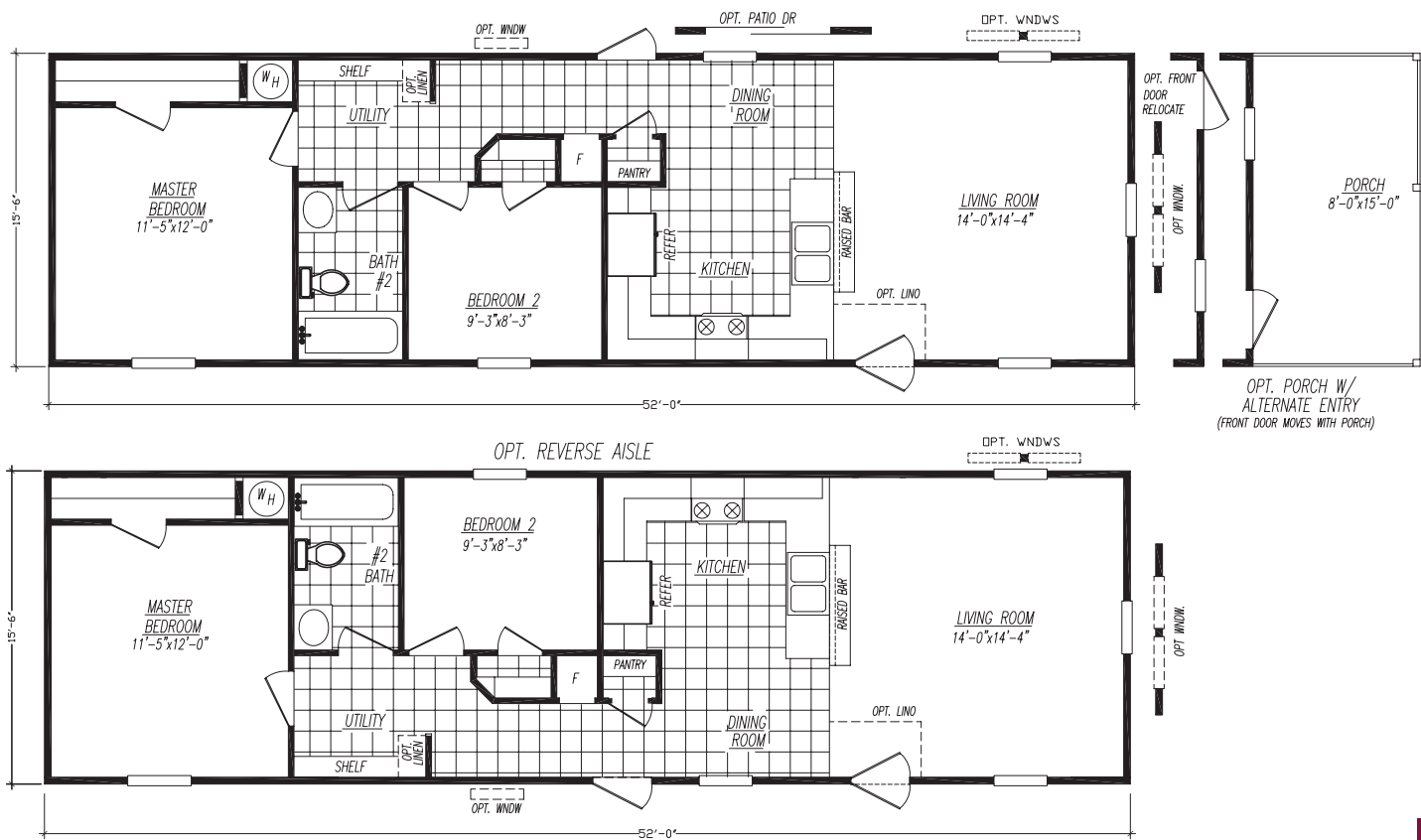
OPT. GLAMOUR BATH





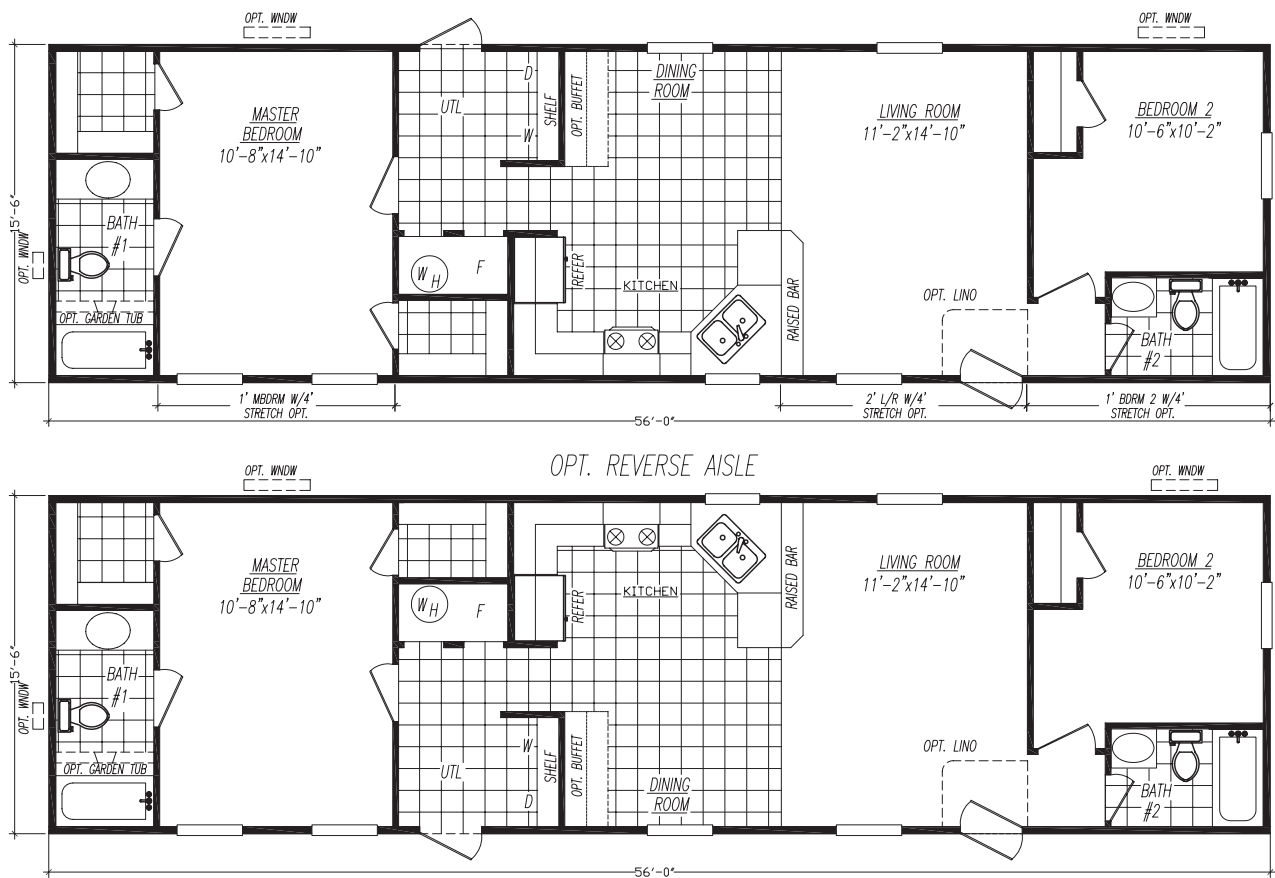
The Vista

Model 6522W • 2 Bedrooms • 1 Bath • Floor Size 806 sq. ft.



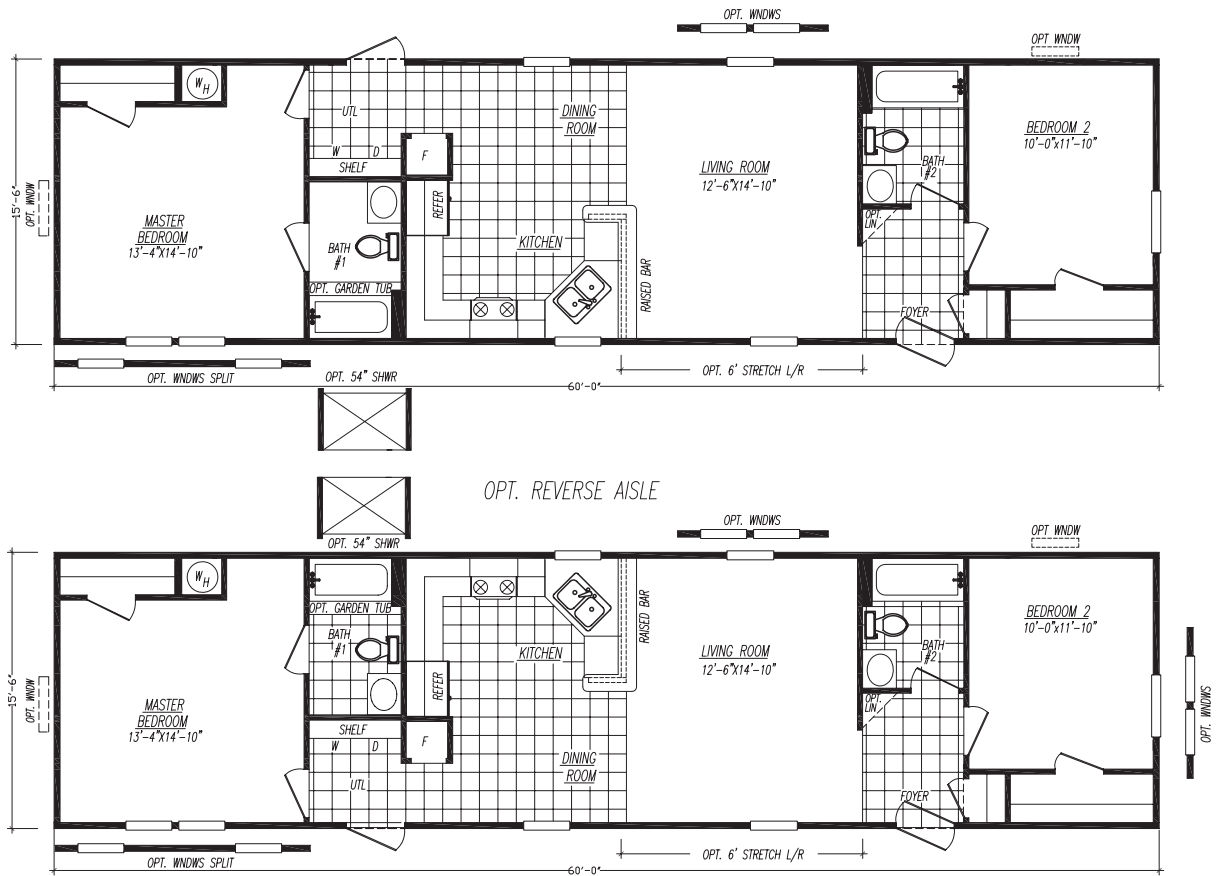
The Pikeville

Model 6562N • 2 Bedrooms • 2 Baths • Floor Size 868 sq. ft.



# The Tippecanoe

Model 1660-2 • 2 Bedrooms • 2 Baths • Floor Size 930 sq. ft.



# The Conestoga

Model 6603U • 3 Bedrooms • 2 Baths • Floor Size 930 sq. ft.





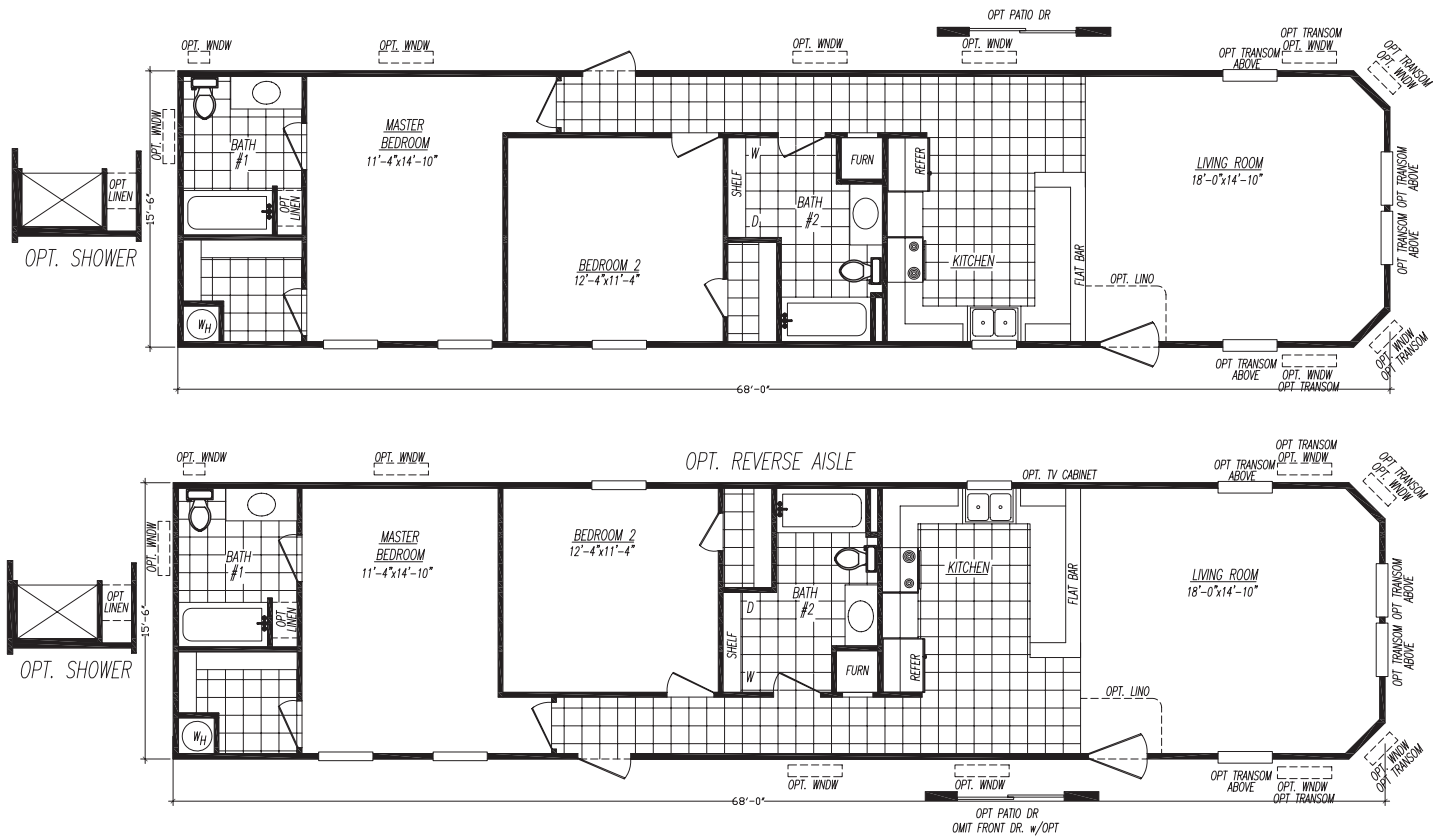
The *Senoran*

Model 6663X • 3 Bedrooms • 2 Baths • Floor Size 1023 sq. ft.



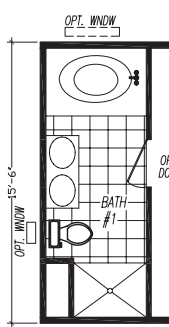
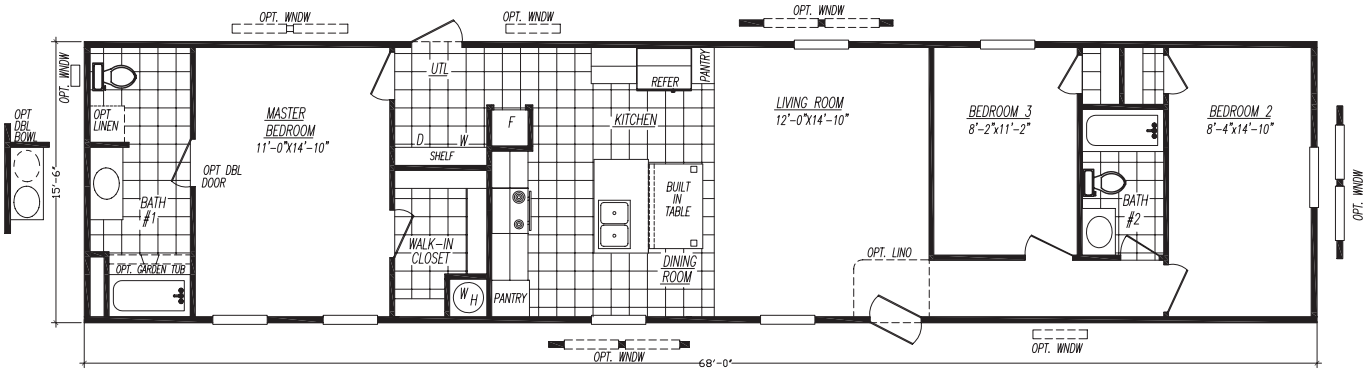
The *Hudson*

Model 6682S • 2 Bedrooms • 2 Baths • Floor Size 1054 sq. ft.

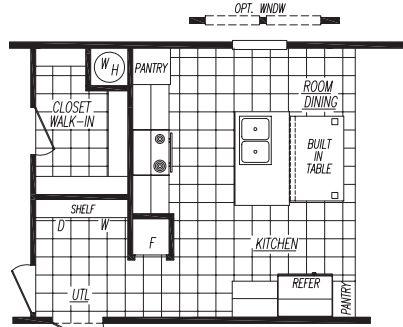


# The Sylvan

Model 6683L • 3 Bedrooms • 2 Baths • Floor Size 1054 sq. ft.



OPT GLAM BATH

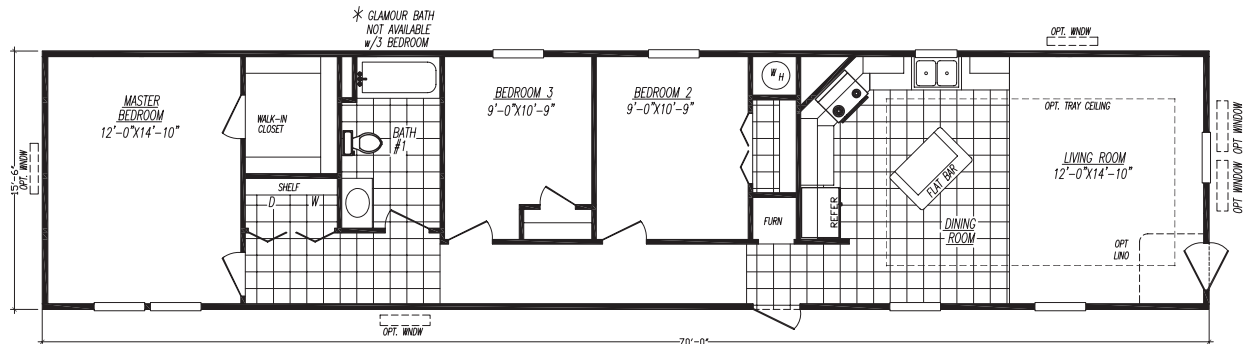
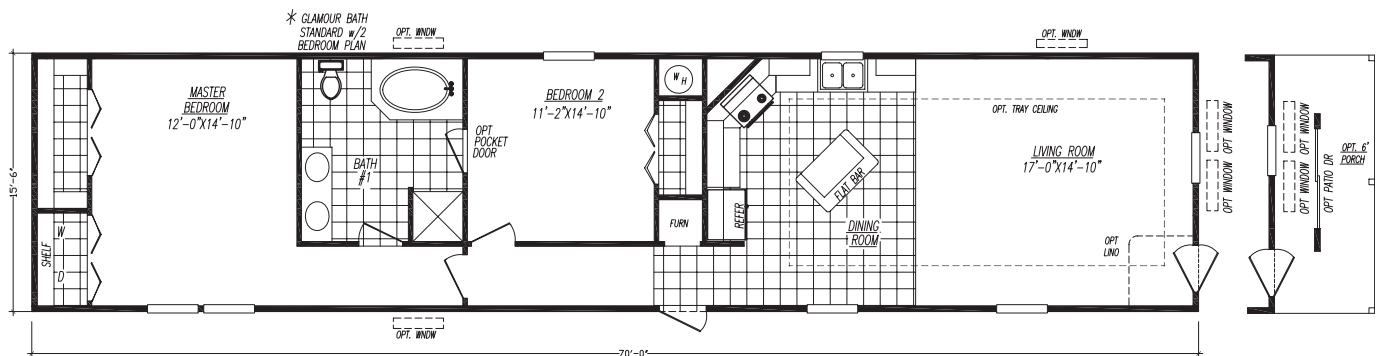


OPT REVERSE AISLE



# The Griffin

Model 6702UR • 2 Bedrooms • 1 Baths • Floor Size 1085 sq. ft.

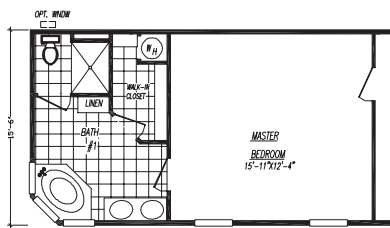
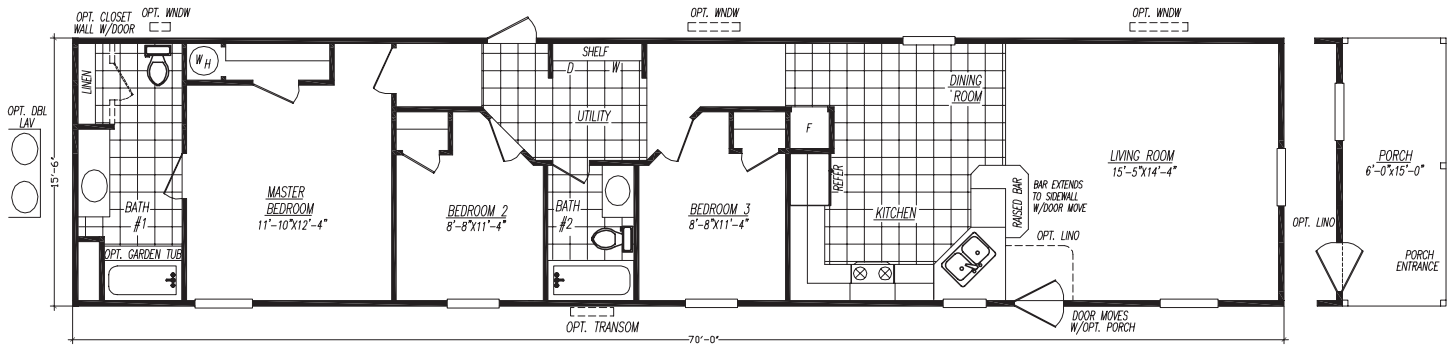


OPT 3RD BEDROOM

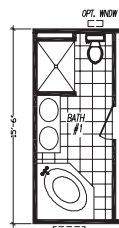


# The Winchester

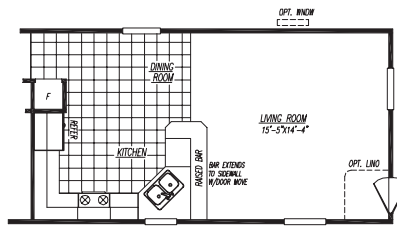
Model 6703F • 3 Bedrooms • 2 Baths • Floor Size 1085 sq. ft.



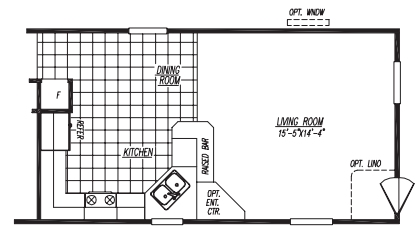
2 BEDROOM OPT. INCLUDES  
GLAMOUR BATH & CLIPPED CORNER



OPT. GLAM BATH



OPT. HIGH BAR TO  
SIDEWALL W/ALT. ENTRY

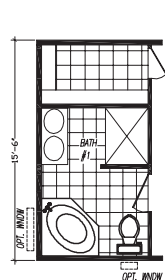
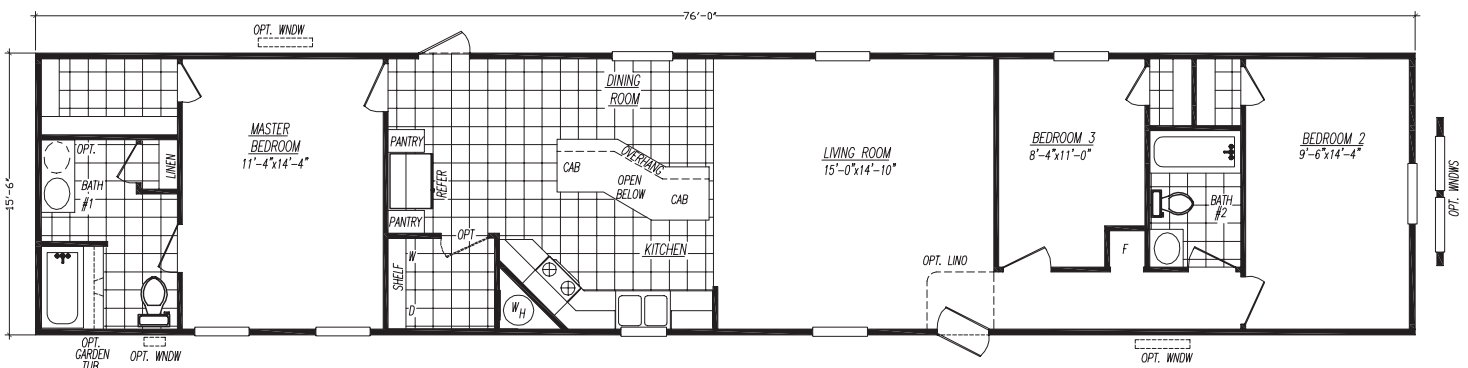


OPT. ENTERTAINMENT CENTER  
W/ALT. ENTRY

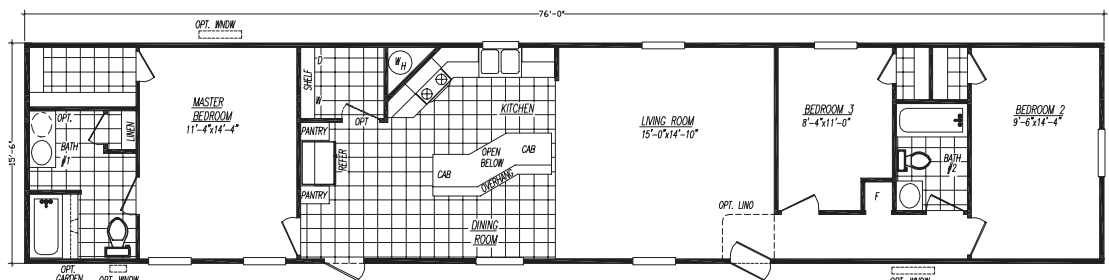
13

# The Southwest

Model 1676-2 • 3 Bedrooms • 2 Baths • Floor Size 1178 sq. ft.

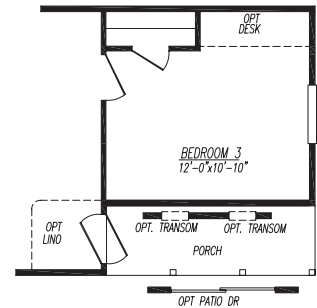
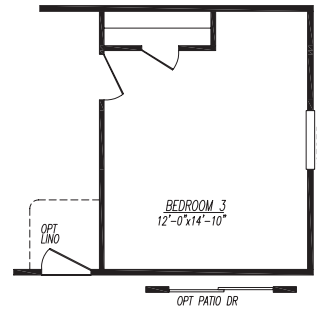
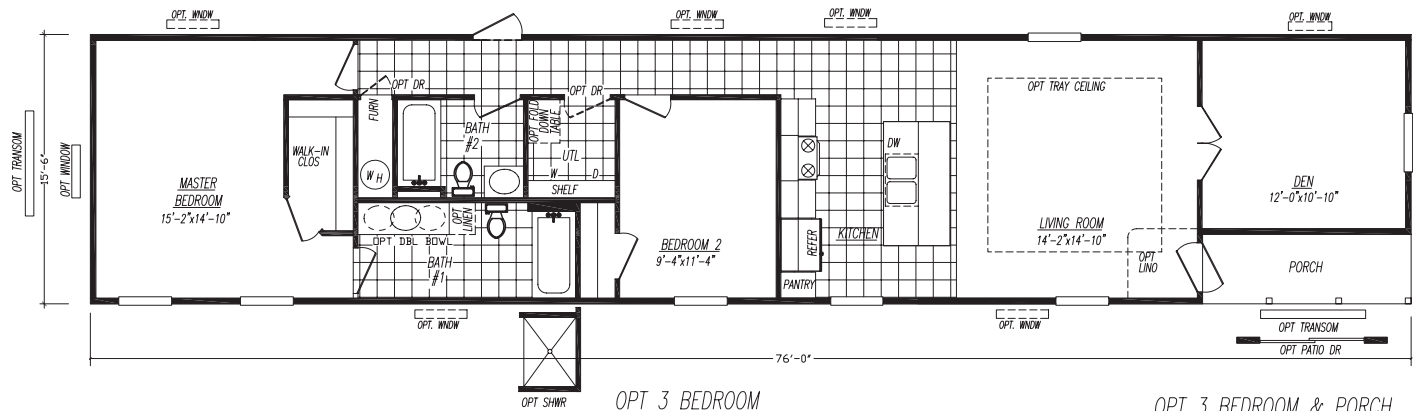


OPT. GLAMOUR BATH



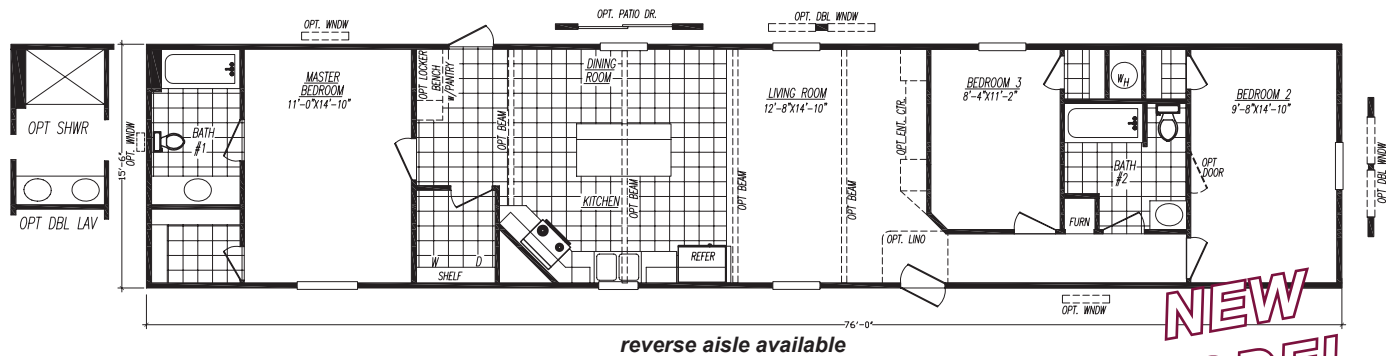
OPT. REVERSE AISLE

**The Westgate** Model 6762L • 2 Bedrooms • 2 Baths • Floor Size 1178 sq. ft.



**reverse aisle available**

**The Landmark** Model 6763AA • 3 Bedrooms • 2 Baths • Floor Size 1178 sq. ft.



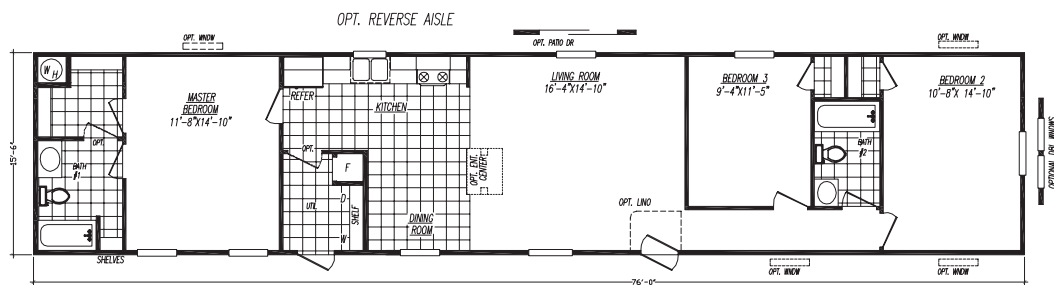
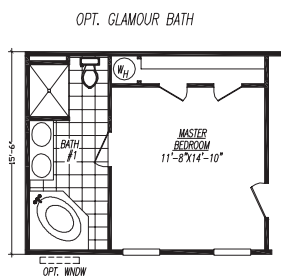
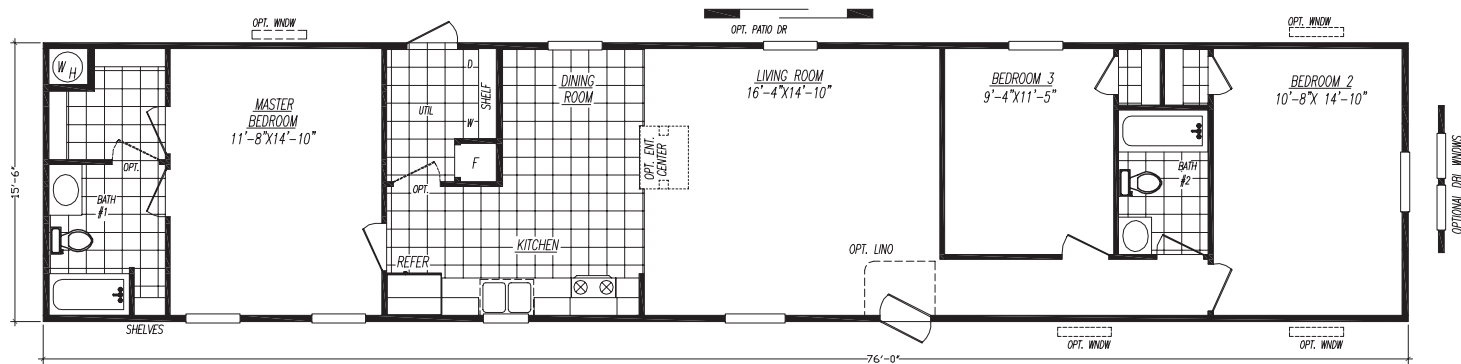
**NEW  
MODEL  
2020**



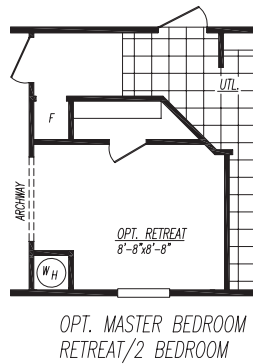
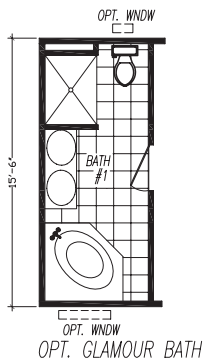
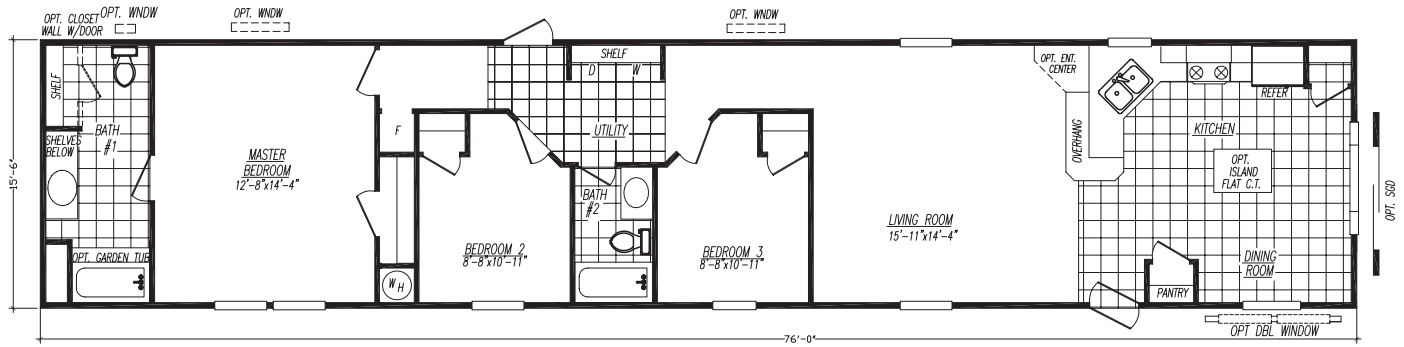


# The Melody

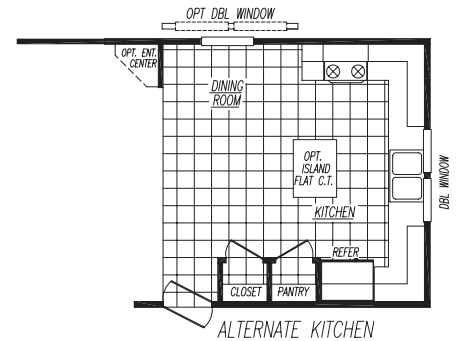
Model 6763B • 3 Bedrooms • 2 Baths • Floor Size 1178 sq. ft.



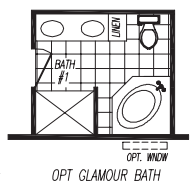
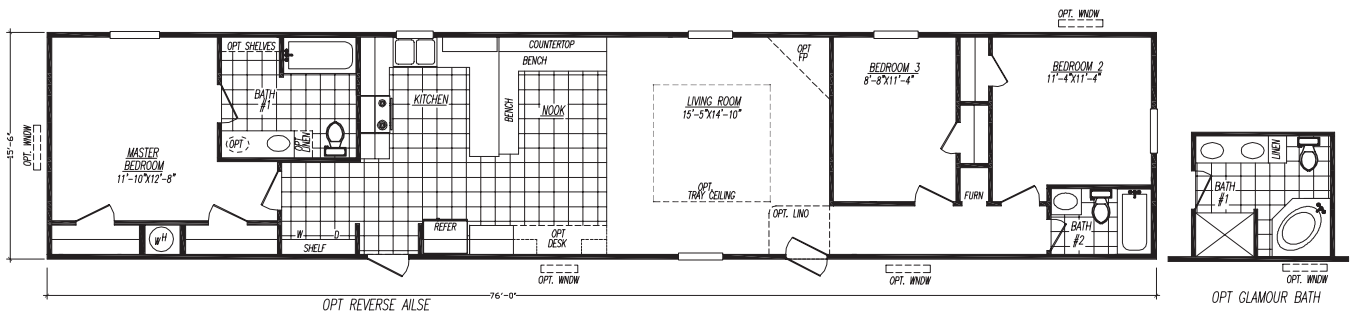
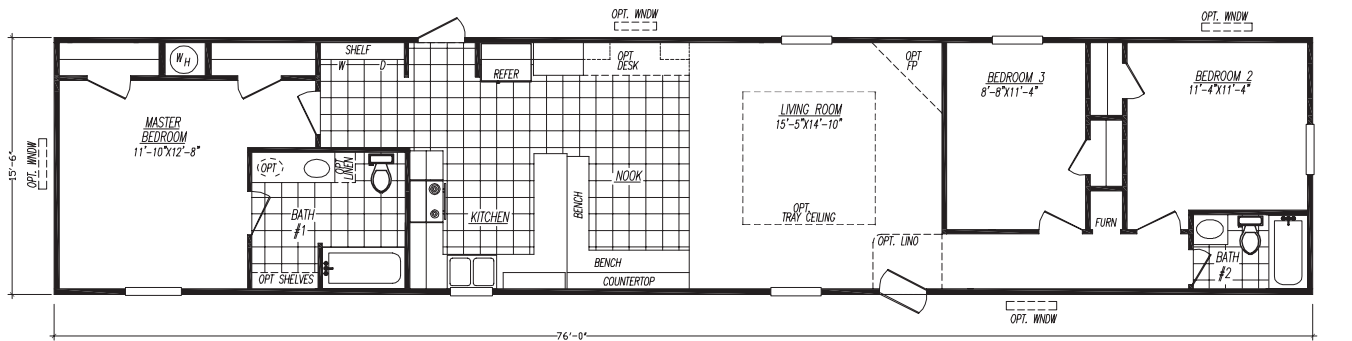
# The Cumberland Model 6763F • 3 Bedrooms • 2 Baths • Floor Size 1178 sq. ft.



REVERSE AISLE  
AVAILABLE



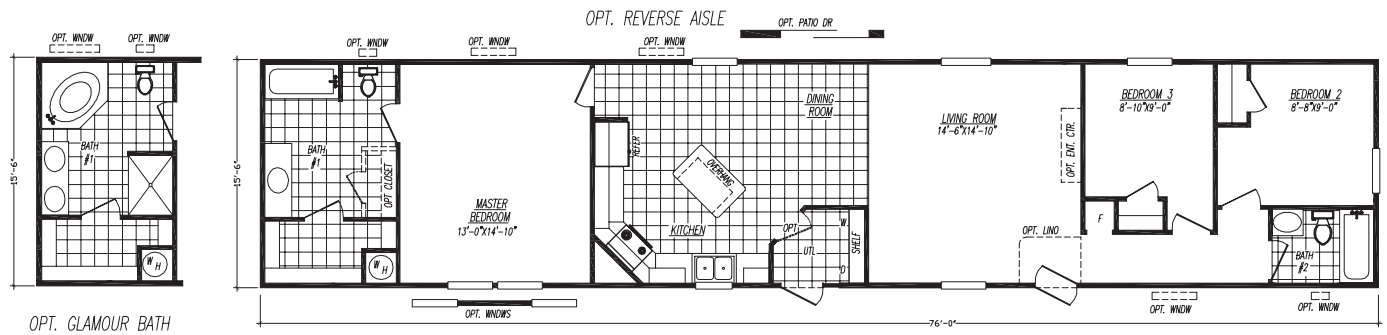
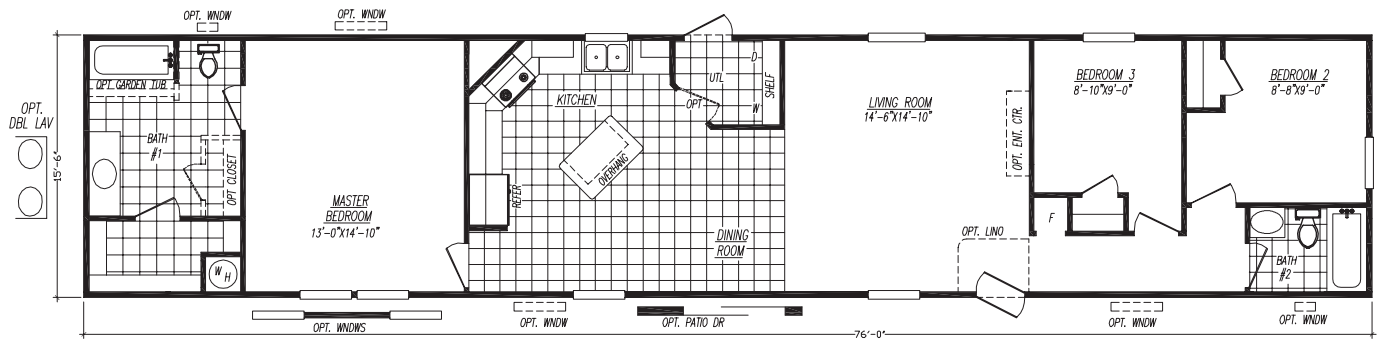
# The Biscayne Model 6763G • 3 Bedrooms • 2 Baths • Floor Size 1178 sq. ft.





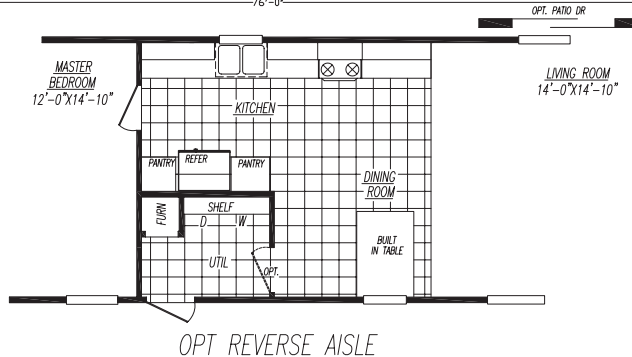
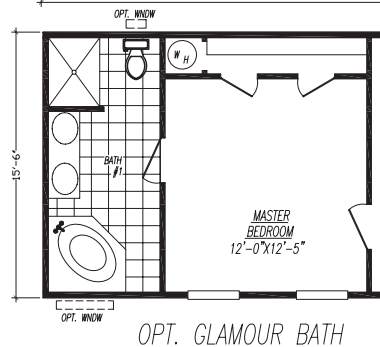
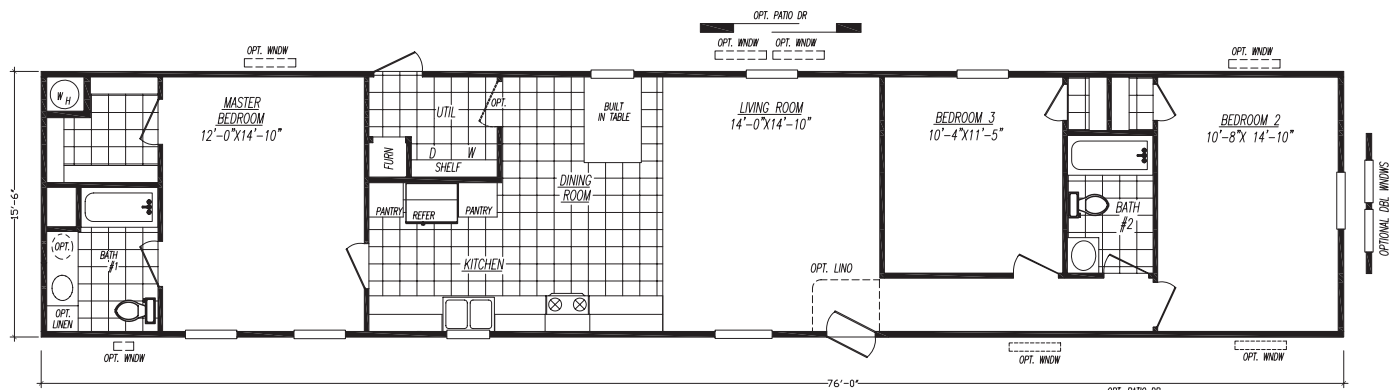
# The Phoenix

Model 6763H • 3 Bedrooms • 2 Baths • Floor Size 1178 sq. ft.



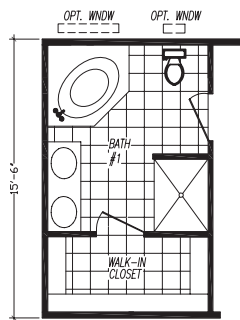
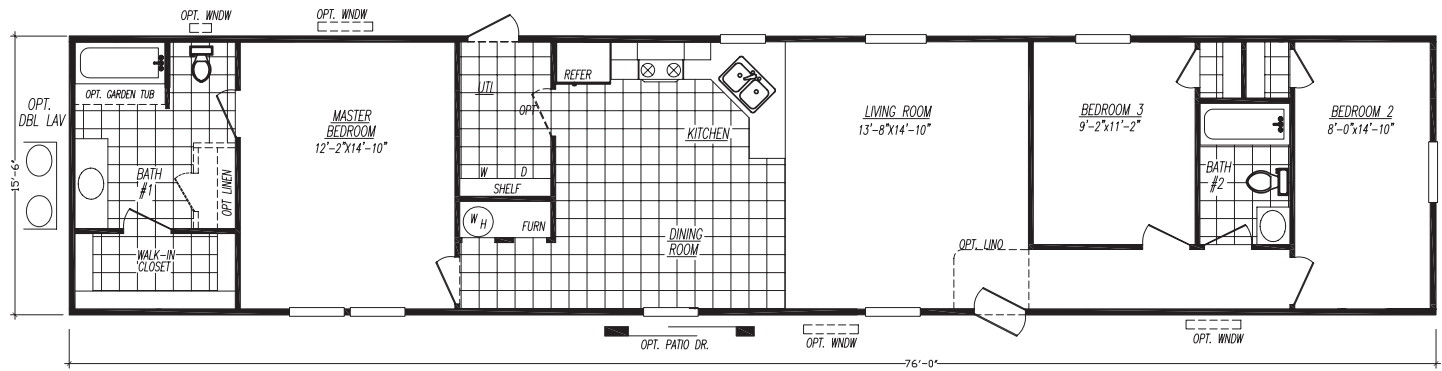
# The Convoy

Model 6763R • 3 Bedrooms • 2 Baths • Floor Size 1178 sq. ft.

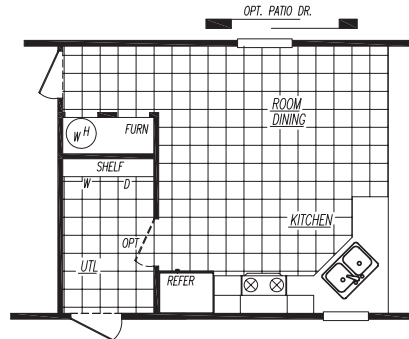


# The Sun Valley

Model 6763S • 3 Bedrooms • 2 Baths • Floor Size 1178 sq. ft.



OPT. GLAM BATH

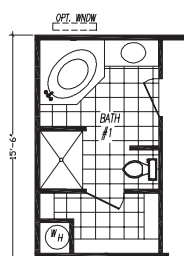
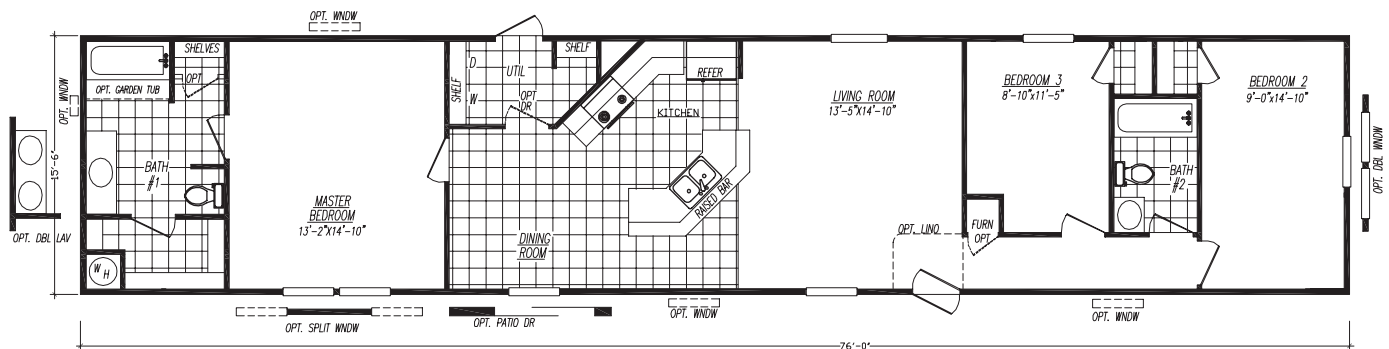


OPT. REVERSE AISLE

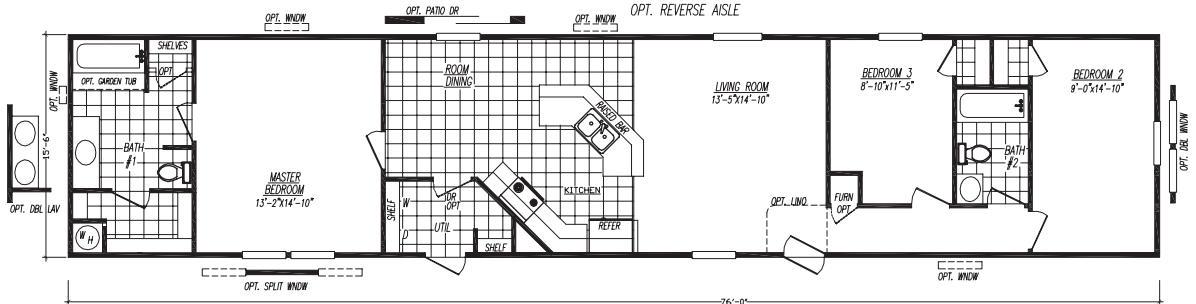


# The Parkway

Model 6763T • 3 Bedrooms • 2 Baths • Floor Size 1178 sq. ft.



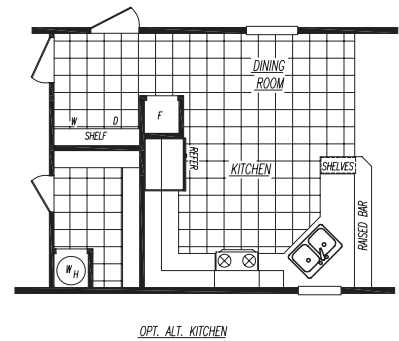
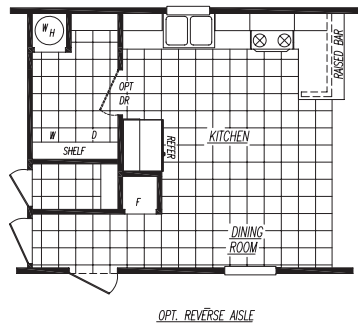
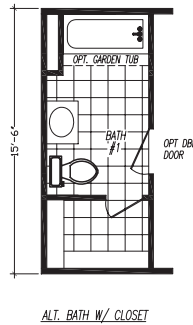
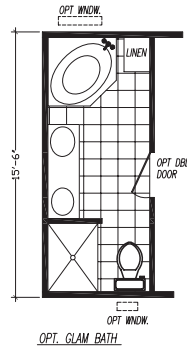
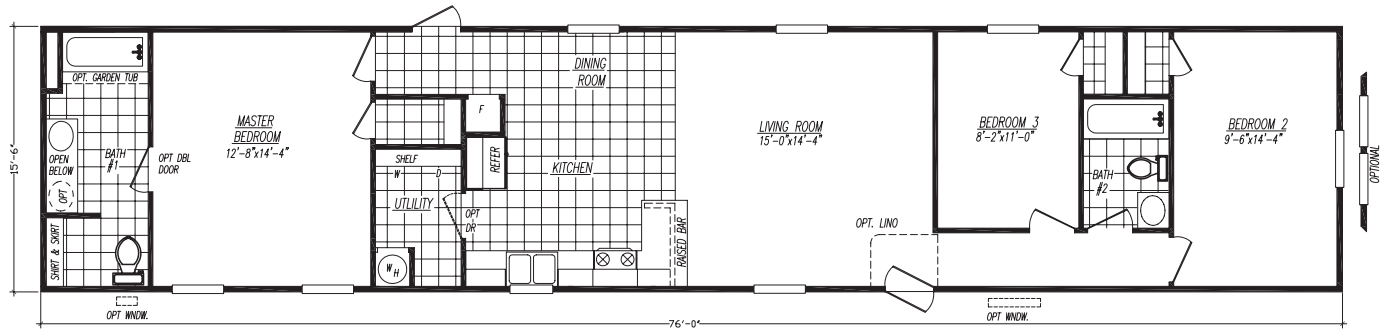
OPT. GLAMOUR BATH





# The Independence

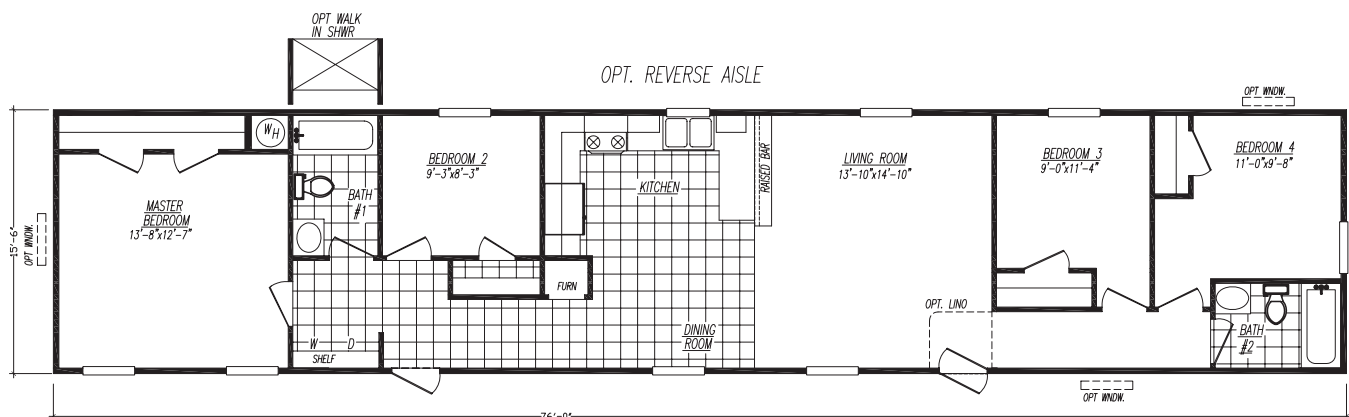
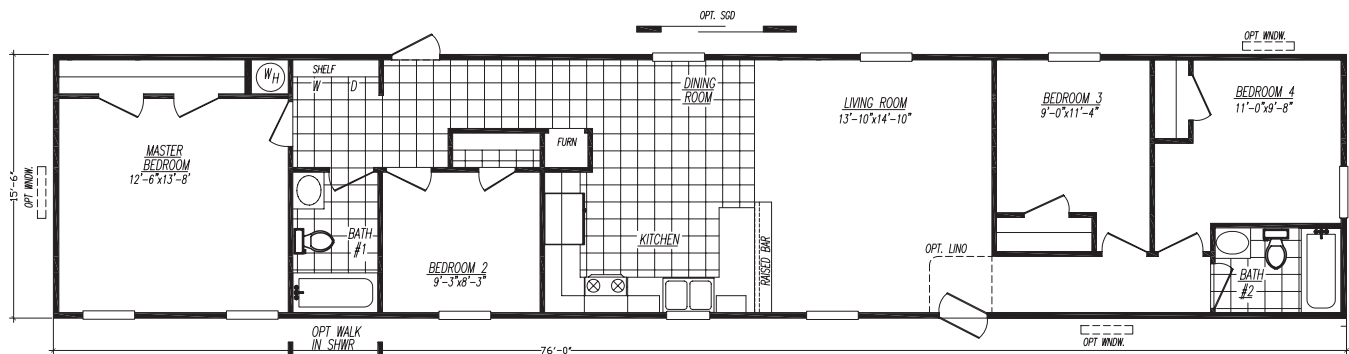
Model 6763X • 3 Bedrooms • 2 Baths • Floor Size 1178 sq. ft.



19

# The Roosevelt

Model 6764X • 4 Bedrooms • 2 Baths • Floor Size 1178 sq. ft.



Please call your sales person with any questions you may have.



# The Mojave Series **Standard Features**



## **Exterior Standards**

Thermal Zone III Construction  
Nominal 3/12 Roof Pitch  
R-28-11-11 Insulation  
(Additional Windows, Doors & Stretches May Require Higher Insulation Values)  
Vinyl Siding by "Georgia Pacific"  
1/4" Backer Board Wrap under Vinyl Siding  
25 year "CertainTeed" Fiberglass Shingles  
7/16" OSB Roof Sheathing  
Dead Bolt Locks at Front and Rear Keyed Alike  
Vinyl Windows w/Grids All Models  
Foam All Exterior Windows  
38 x 82 RO 6 Panel Steel Front Door with Storm  
34 x 82 RO Steel Outswing Rear Door (No Storm)  
2x6 Floor Joists 16" O.C. (14' & 28' Wides)  
2x8 Floor Joists 16" O.C. (16' & 32' Wides)  
20 LB Roof Load  
2x4 Exterior Walls 16" O.C.  
94" Flat Ceilings - All Models  
OSB Floor Decking  
12" Raised Panel Shutters @ FDS Only (Sectionals)  
12" Raised Panel Shutters @ FDS & Hitch End (SW Only)  
Light Fixtures at All Exterior Doors  
Full Length Chassis w/ Outriggers 96" O.C.  
99.5" I-Beam Spread, Detachable Hitch



## **Interior Standards**

Decor Selections  
2" Plastic Mini-Blinds Throughout  
Door Stop All 3 Sides  
Blown Textured Ceiling  
Vinyl Wall Panels Throughout  
Flat Wrapped Moldings Throughout  
16 oz. Plush Carpet "Shaw"  
3/8" Rebond Carpet Pad  
Ventilated "Closet Maid" Vinyl Closet Shelving  
Carpet Installed in All Bedrooms  
Glass Ceiling Lights  
6 Panel White Interior Doors Throughout  
3 Hinge Interior Doors

*Because of continuous product improvements, specifications are subject to change without notice or obligation.*



## **Electrical, Plumbing, & Heating**

Smoke Detectors in Main Living Areas & All Bedrooms  
200 AMP Service, Electric Furnace  
40 Gallon Electric Water Heater  
Exterior Electrical Receptacle (FDS)  
Copper Wiring, PEX Plumbing  
Conventional Receptacles & Switches  
Whole House Shut-Off Valve Near Water Heater  
Water Shut-Off Valves All Sinks & Commodes  
Metal Heat Ducts  
GFI Receptacles in Kitchen and Baths  
Plumb & Wire for Washer & Dryer  
Ventilated "Closet Maid" Vinyl Utility Shelf



## **Kitchen Standards**

White Whirlpool Appliances  
30" Free Standing Electric Range  
18 C.F. Frost-Free Refrigerator  
30" Power Range Hood  
30" Overhead Cabinets  
Raised Panel MDF Cabinet Doors  
Concealed Cabinet Door Hinges  
Bank of Drawers w/Residential Rails & Guides  
Laminated Countertops  
"Congoleum" Vinyl Flooring  
Stainless Steel Kitchen Sink  
Fixed Shelves in Overhead Cabinets  
Shelf Above Refrigerator



## **Bath Standards**

Tub Shower w/ Surround w/Metal Anti-Scald Single Lever Faucet In Bathroom(S)  
Laminated Countertops  
Mirror Above Each Bathroom Sink  
Power Exhaust Fans in All Baths  
China "Water Saver" Commodes Both Baths  
White Plastic Sink(s) w/Dual Knob Faucets  
"Congoleum" Vinyl Flooring  
Garden Tubs w/Surround Master Bath (MS where available)

**Select Models offered as State Code Modular's. Call your sales representative for model and state availability.  
(Modular Standards WILL differ from HUD: Modular Floorplans offered may differ from HUD)**



## **ADVENTURE HOMES, LLC**

**1119 Fuller Drive • Garrett, IN 46738 • Ph: 877.510.1955**

**[www.adventurehomes.net](http://www.adventurehomes.net)**

February 2020