

2020



Mojave Series

Homes
Sectional



Luxury and Comfort for Less

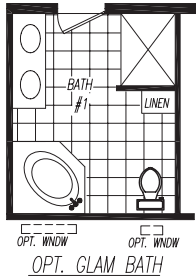
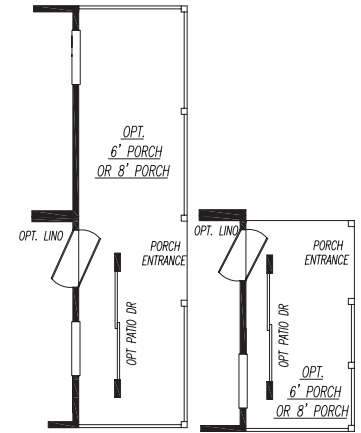
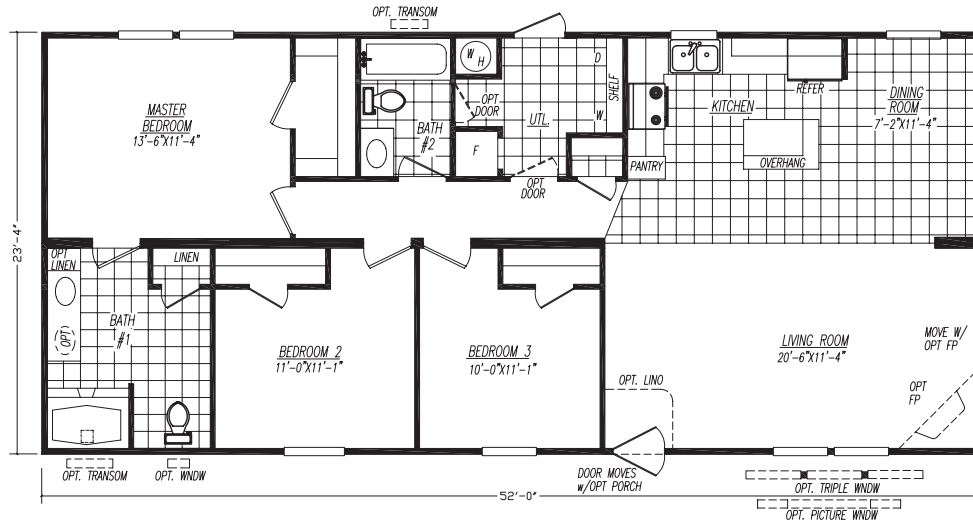
Adventure Homes of Indiana

Your adventure begins here.

Welcome to Adventure Homes. We offer you the best value in manufactured housing. Our homes have unbelievable eye appeal, product standards, and the flexibility you need with every home we build. Additionally, we offer award winning sales, service and production teams to enhance your value even more. We look forward to assisting you and welcoming you into our family of satisfied retailers and customers!

The Crusade

Model 3523F • 3 Bedrooms • 2 Baths • Floor Size 1213 sq. ft.



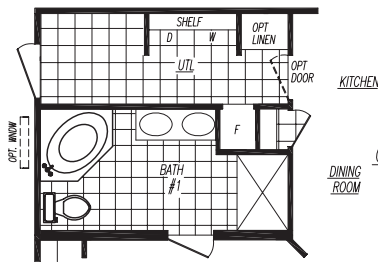
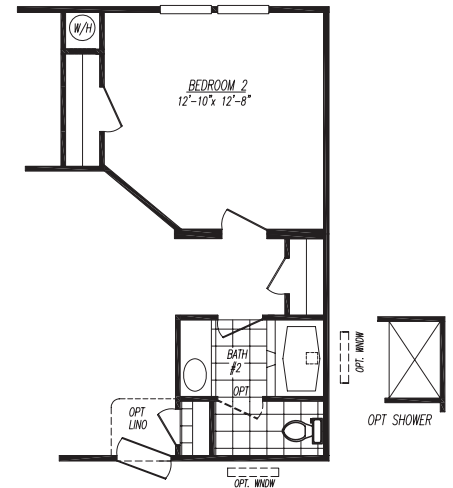
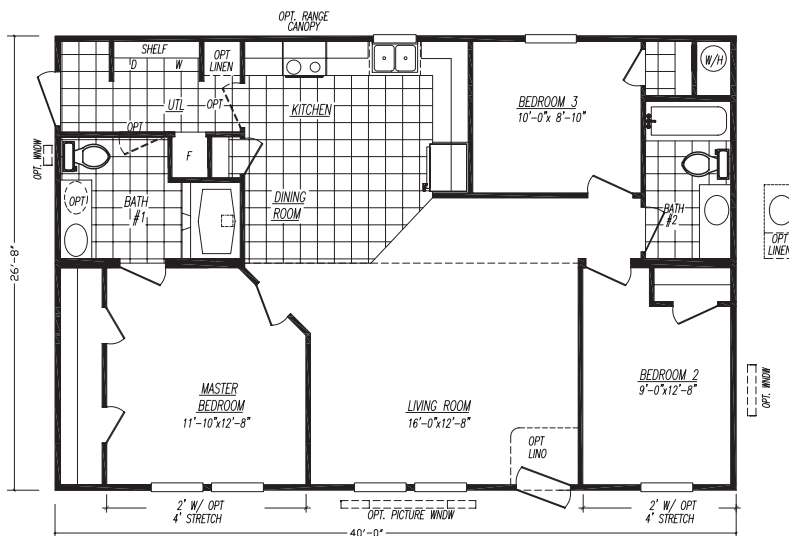
Every Adventure home is built with premium construction materials in a climate-controlled enclosed building center. This helps eliminate weather-damaged building materials and weather-related building delays. These state-of-the-art facilities ensure precise and quality construction. All Adventure homes meet, and in many cases exceed HUD code.

Adventure Homes offers a wide selection of floor plans sure to meet your needs with a variety of optional finishes and designs that will truly make this your home.

These homes are designed with today's family in mind. Our spacious floor plans and residential flat ceilings allow for open and airy kitchens with ample light.

The Portage

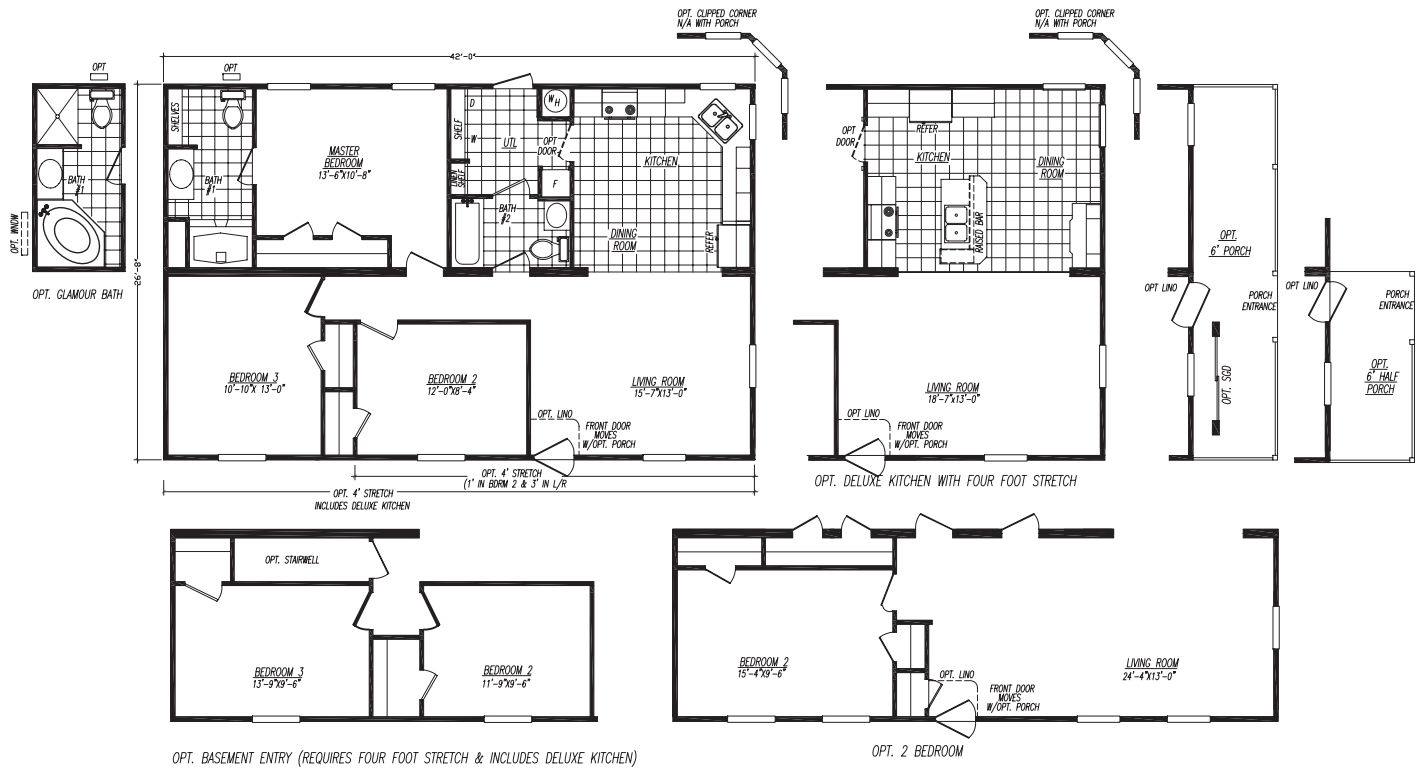
Model 4403C • 3 Bedrooms • 2 Baths • Floor Size 1067 sq. ft.



OPT. GLAM BATH
ONLY AVAILABLE WITH 4' STRETCH
IN MASTER BATH & M-BDRM

OPT. 2 BEDROOM

Model 4423S-M • 3 Bedrooms • 2 Baths • Floor Size 1120 sq. ft.

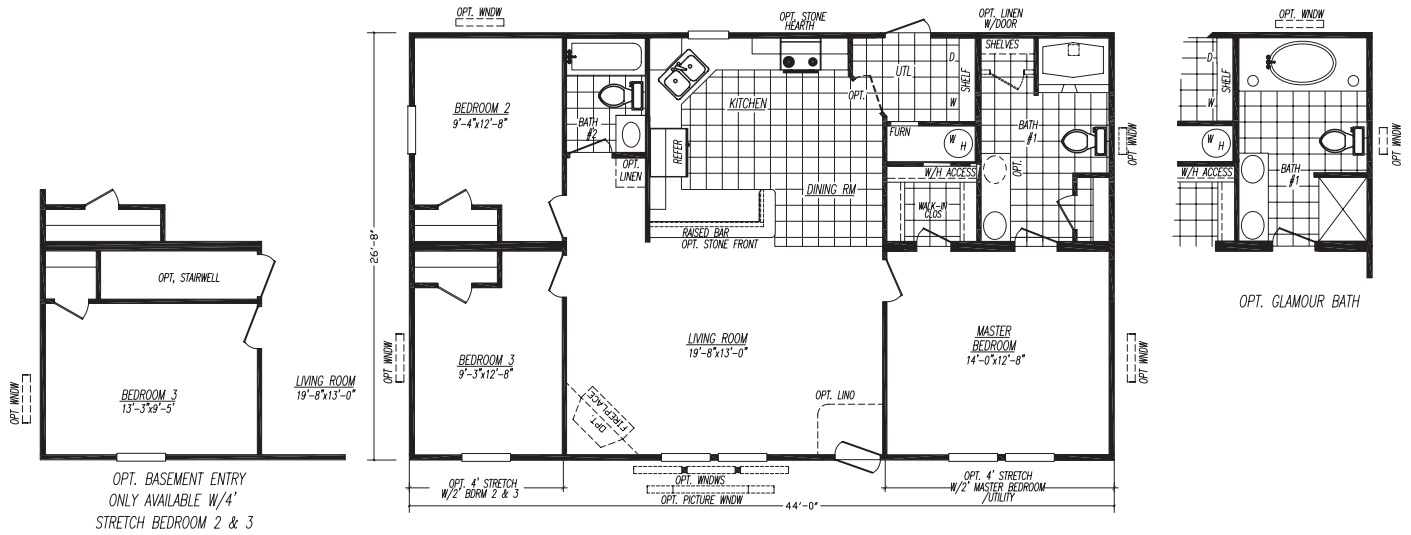


Model 4443U • 3 Bedrooms • 2 Baths • Floor Size 1173 sq. ft.



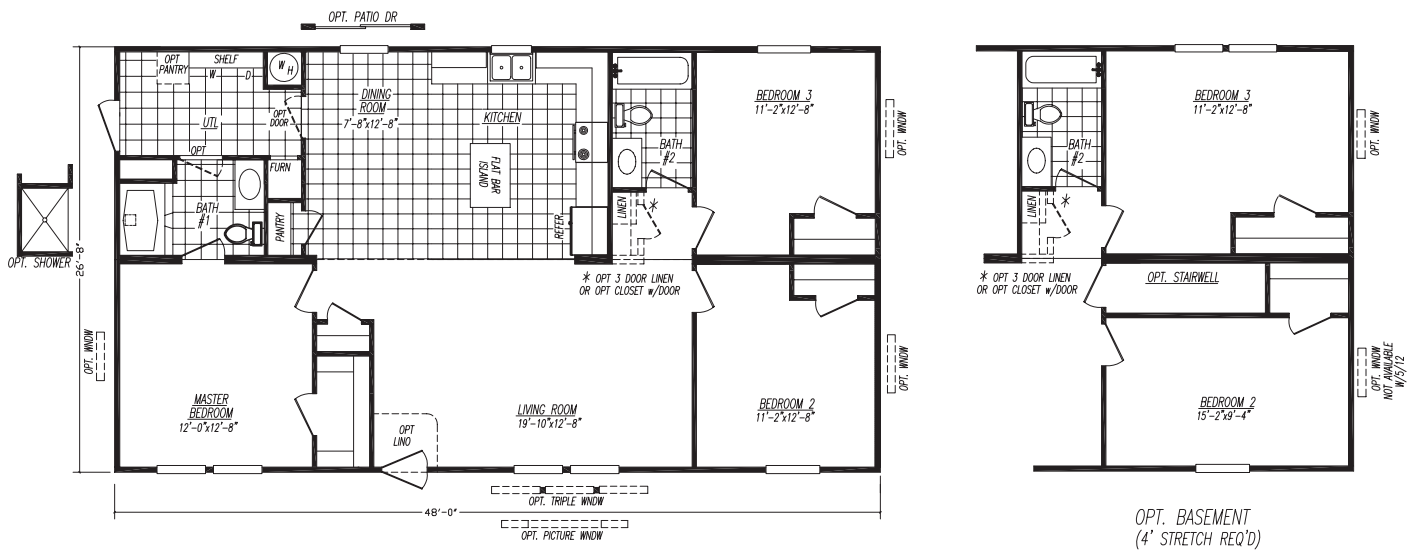
The *Kankakee*

Model 2844-1 • 3 Bedrooms • 2 Baths • Floor Size 1173 sq. ft.



The Woodland

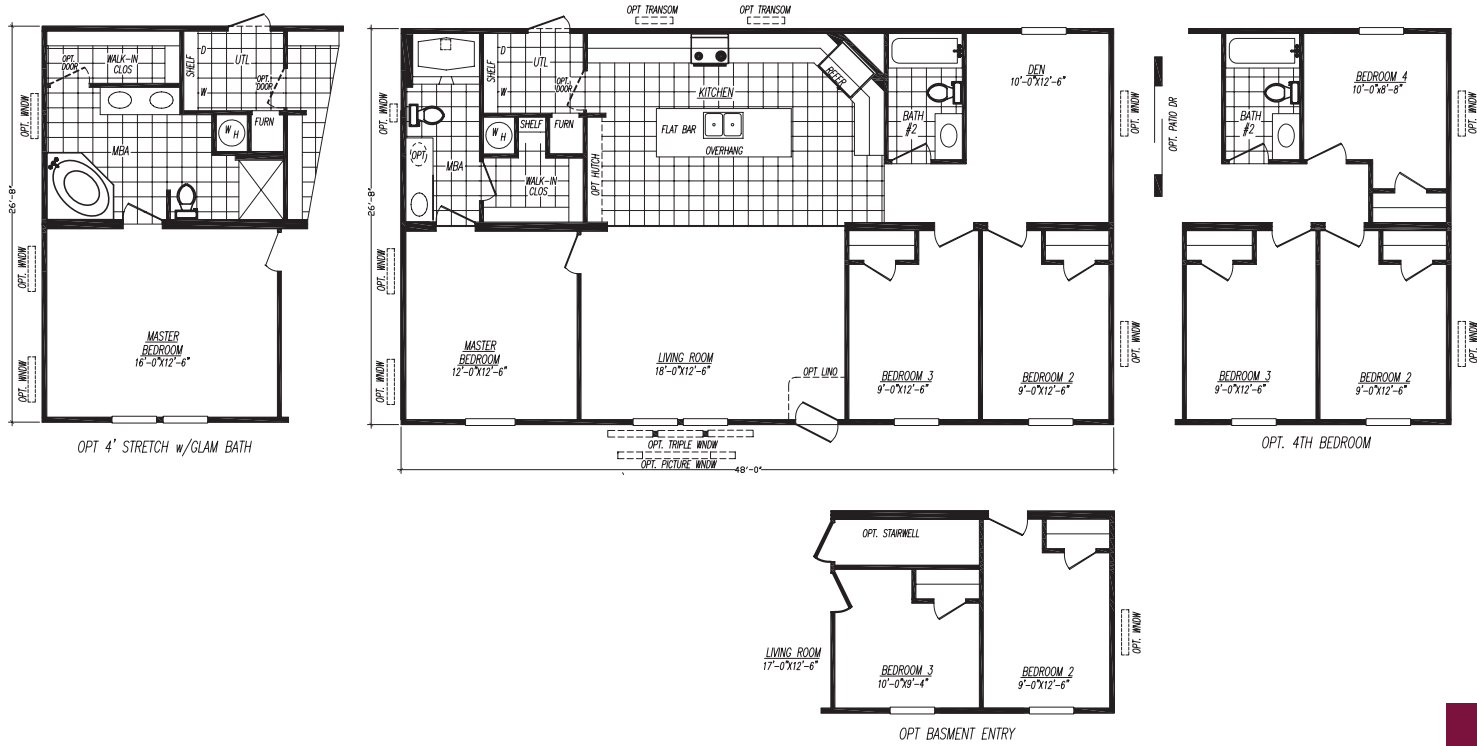
Model 4483M • 3 Bedrooms • 2 Baths • Floor Size 1280 sq. ft.



All photographs shown are randomly placed and may not represent the model shown on the same page.

The Coronado

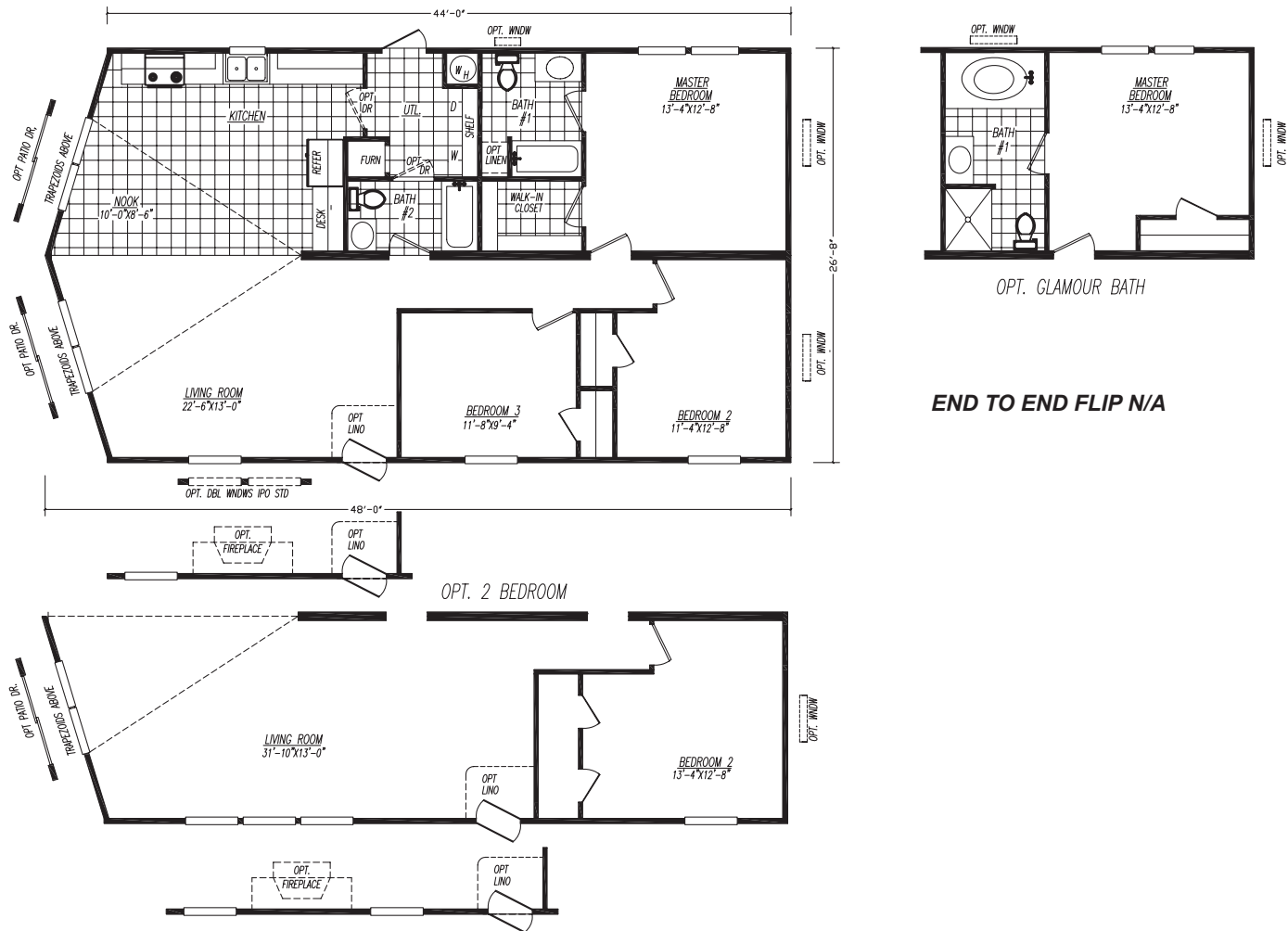
Model 4483S • 3 Bedrooms • 2 Baths • Floor Size 1280 sq. ft.



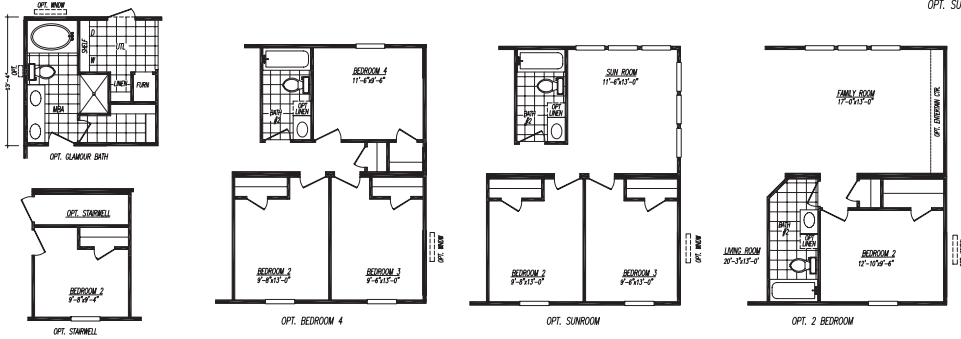
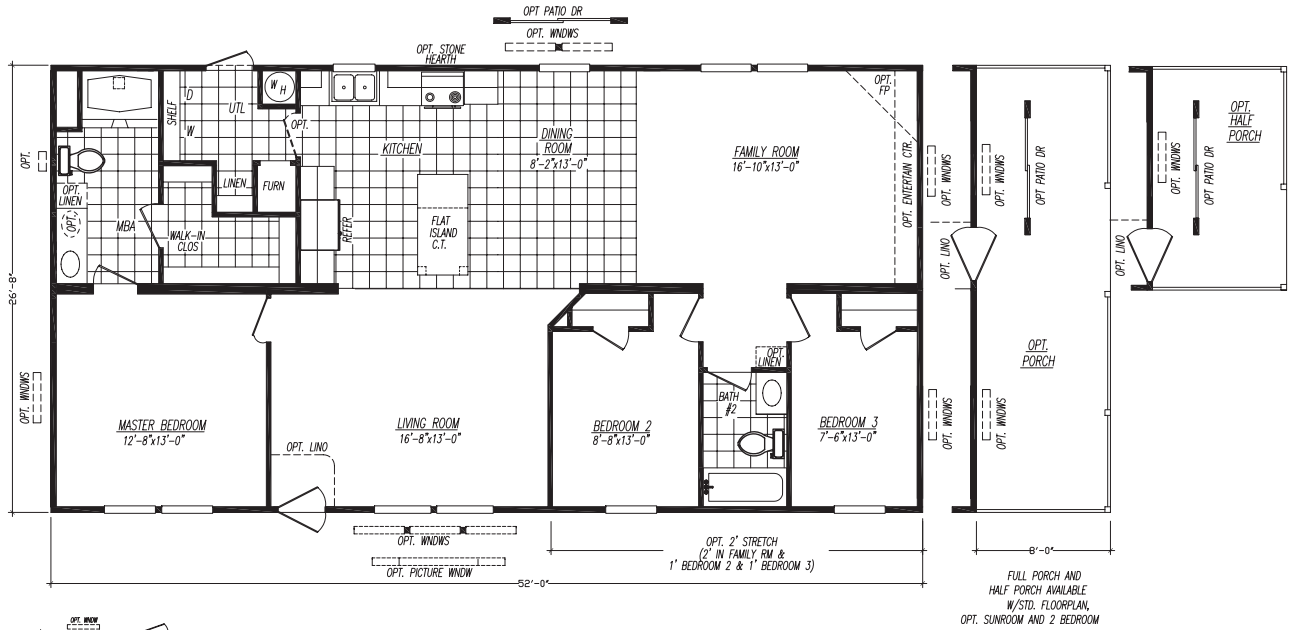
5

The Dunes

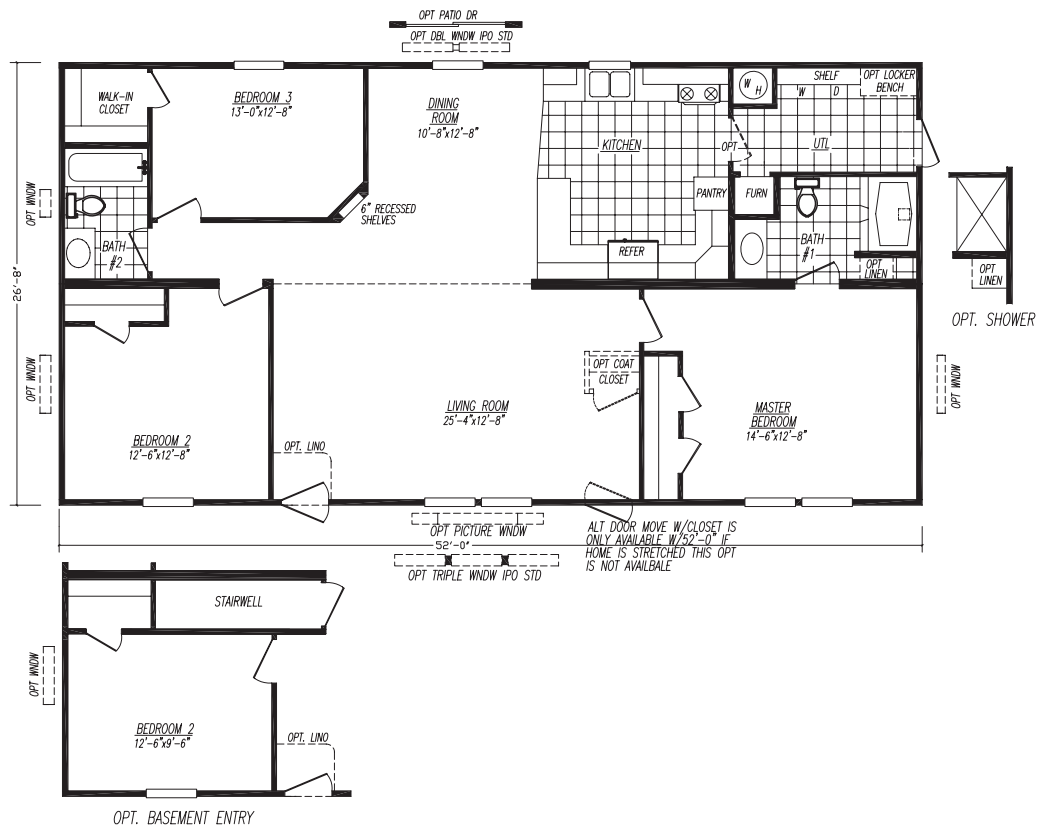
Model 4483TR • 3 Bedrooms • 2 Baths • Floor Size 1280 sq. ft.



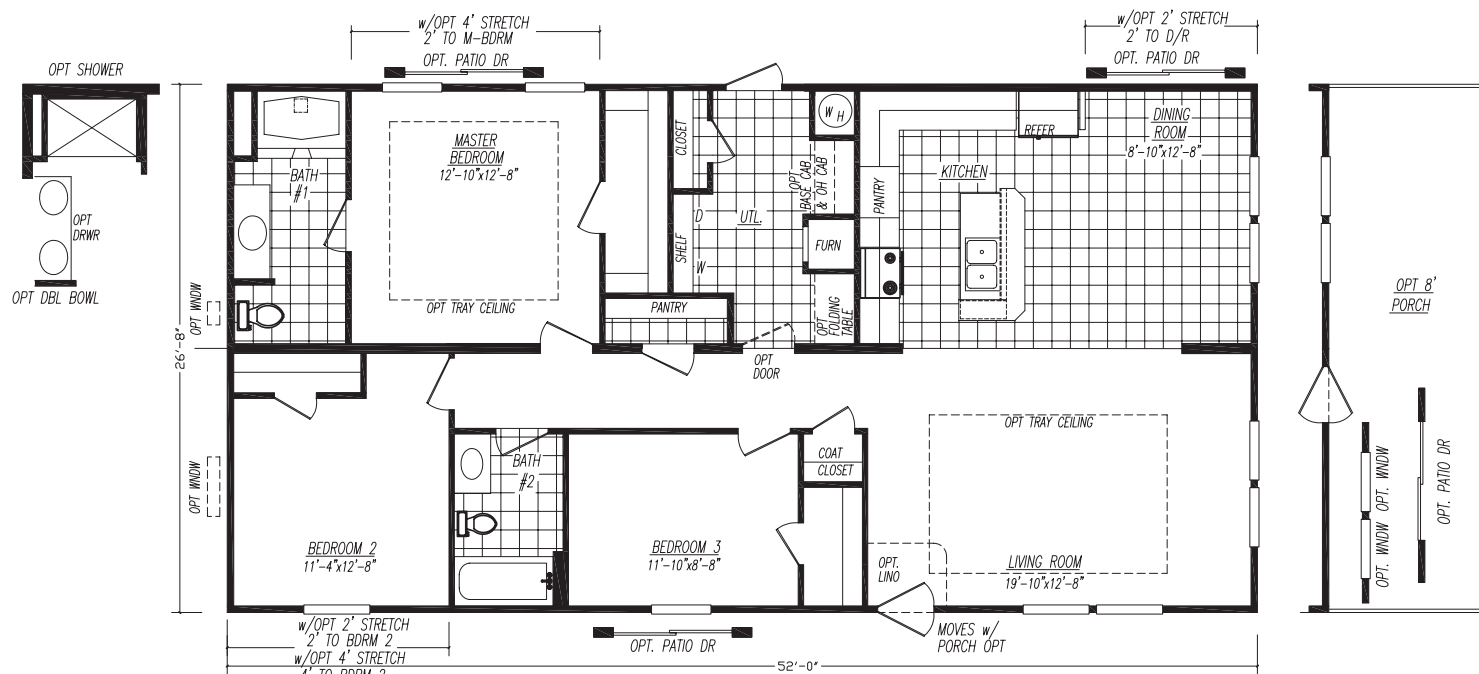
Model 2852-1 • 3 Bedrooms • 2 Baths • Floor Size 1387 sq. ft.



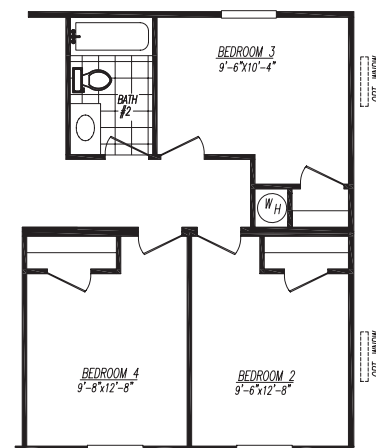
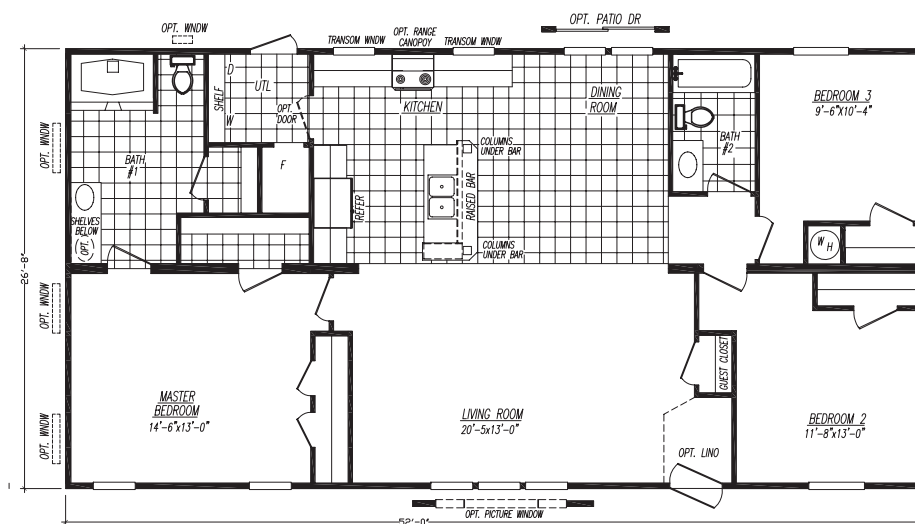
Model 4523C • 3 Bedrooms • 2 Baths • Floor Size 1387 sq. ft.



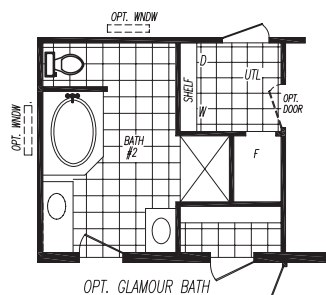
Model 4523R • 3 Bedrooms • 2 Baths • Floor Size 1387 sq. ft.



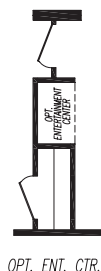
Model 4523U • 3 Bedrooms • 2 Baths • Floor Size 1387 sq. ft.



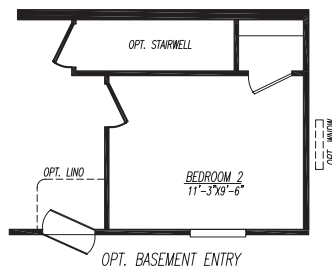
OPT. 4TH BEDROOM REQUIRES 2' STRETCH
AND OMITS MASTER BEDROOM CLOSET



OPT. GLAMOUR BATH



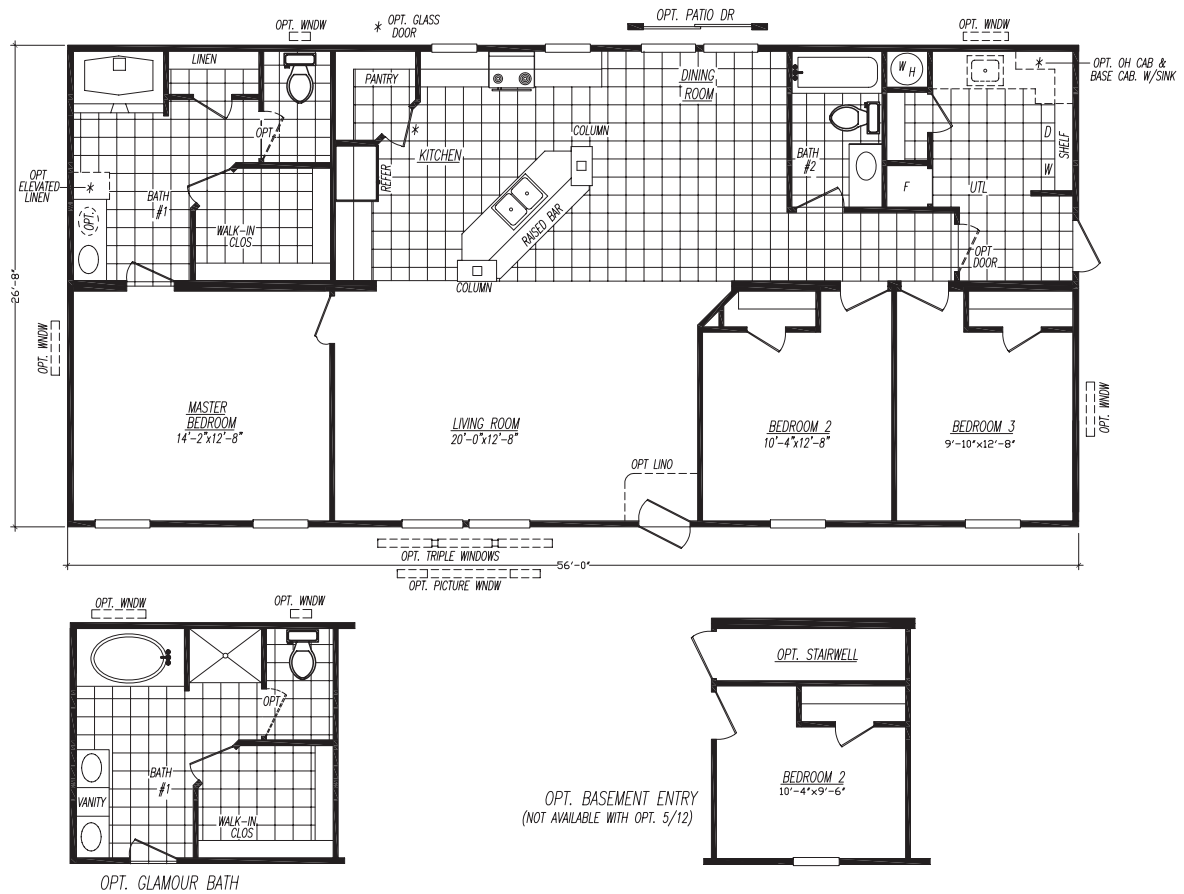
OPT. ENT. CTR.



OPT. BASEMENT ENTRY

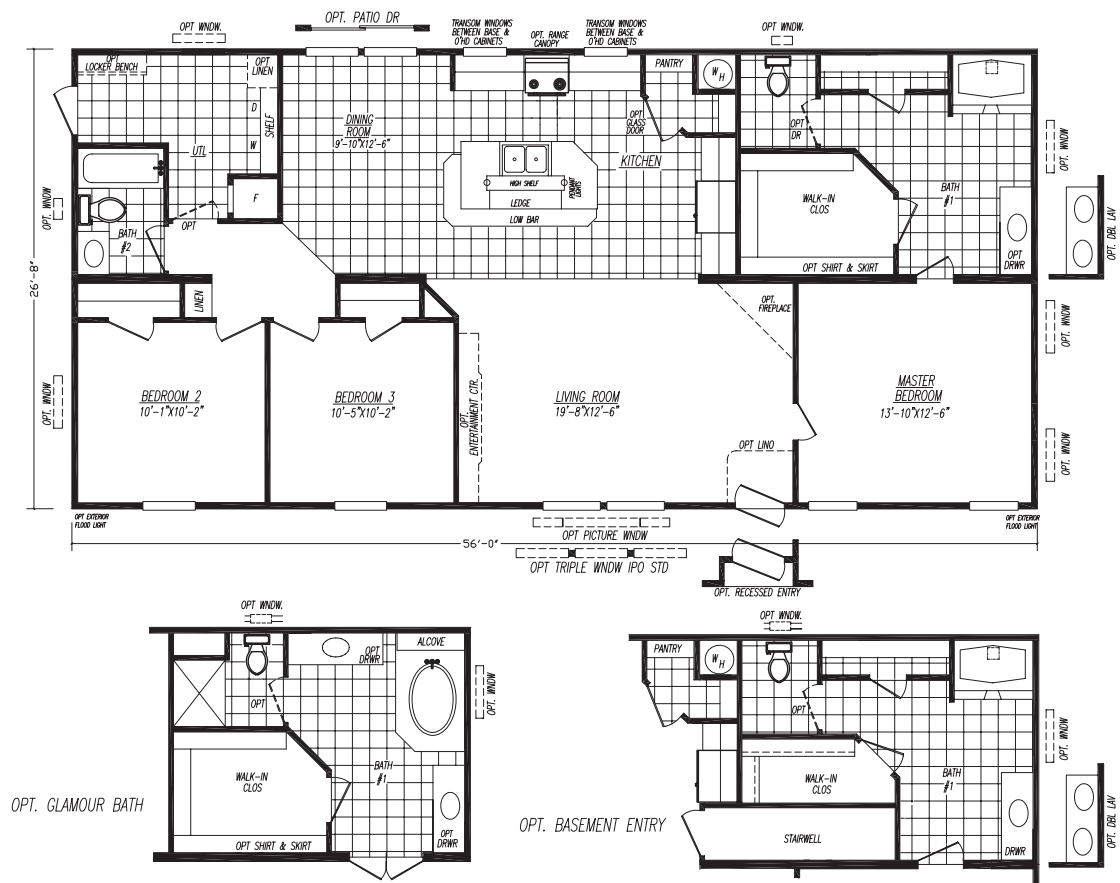
The Great Plains Model 2856-1-M • 3 Bedrooms • 2 Baths • Floor Size 1493 sq. ft.

Model 2856-1-M • 3 Bedrooms • 2 Baths • Floor Size 1493 sq. ft.



The Yukon

Model 4563E • 3 Bedrooms • 2 Baths • Floor Size 1493 sq. ft.



The Zenith

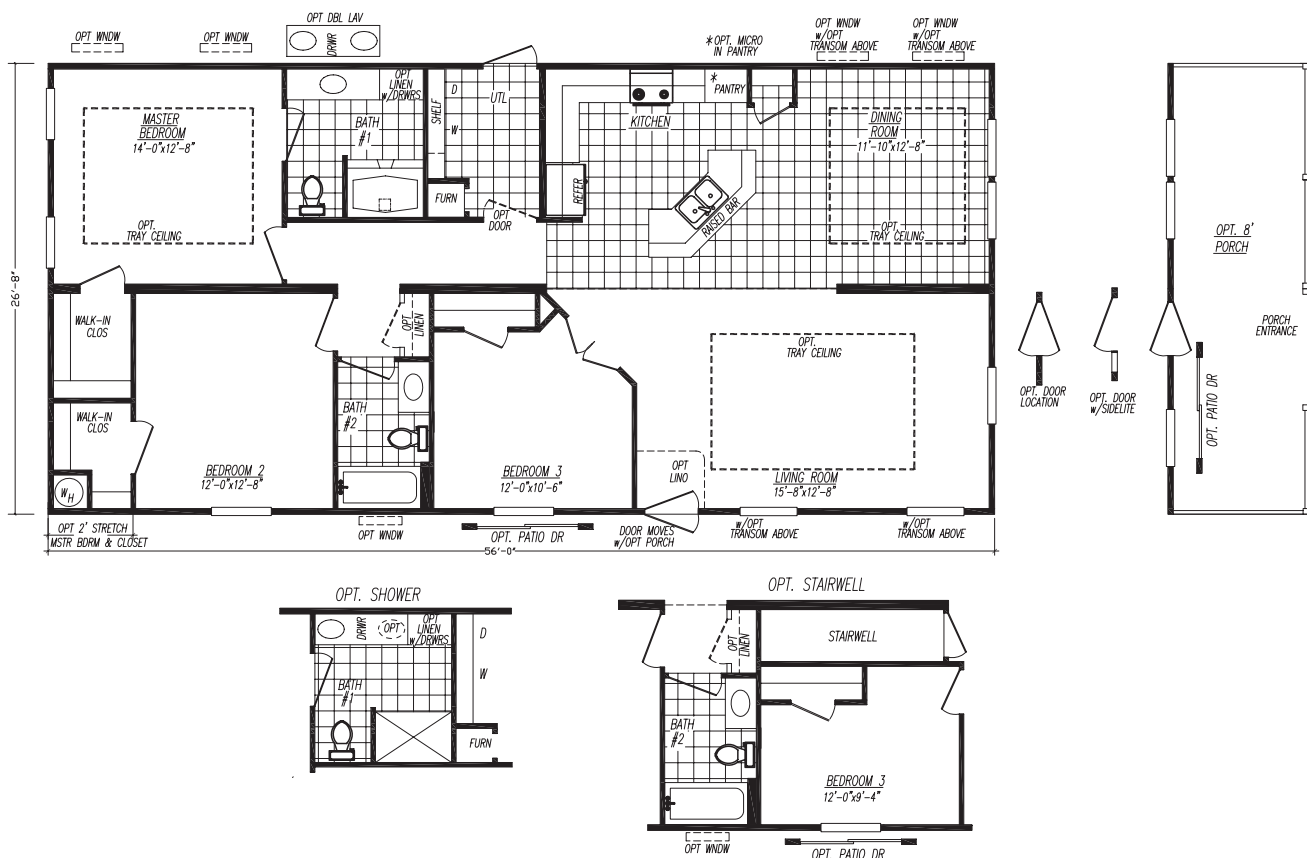
Model 4563N • 3 Bedrooms • 2 Baths • Floor Size 1493 sq. ft.



9

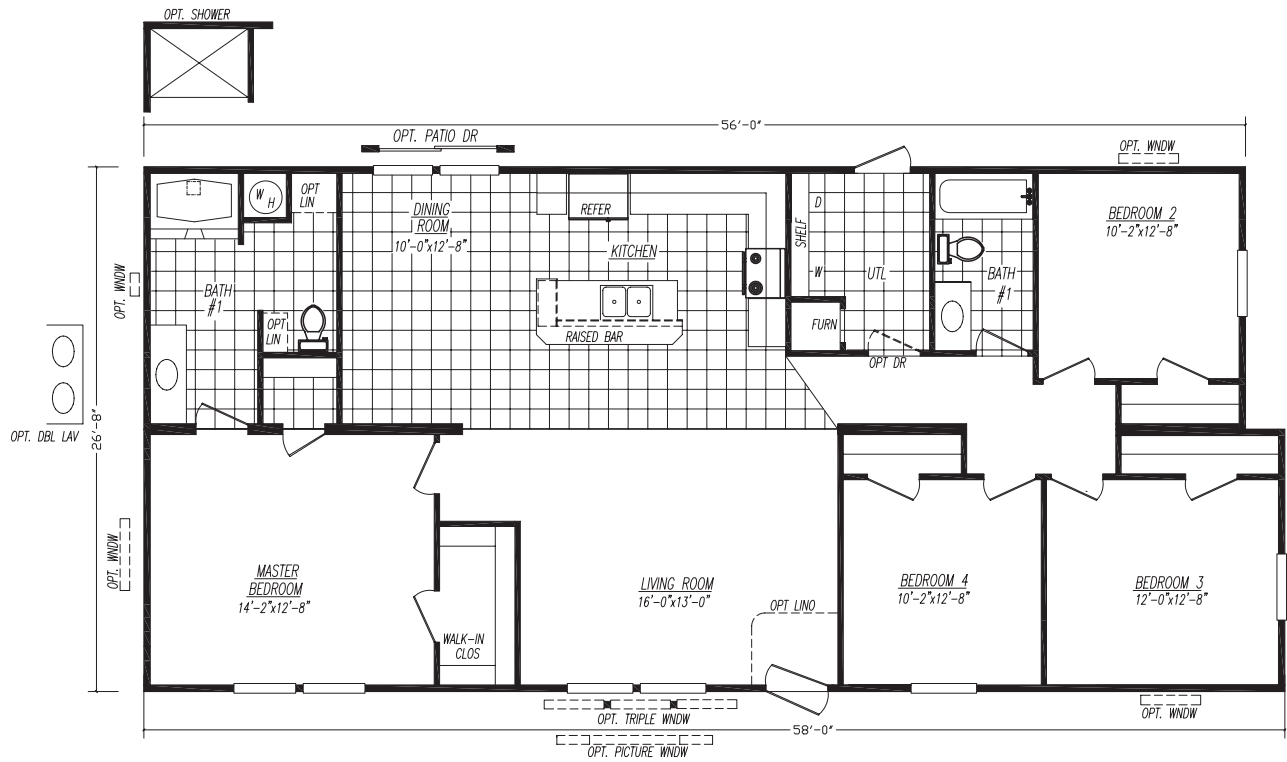
The Rockford

Model 4563Z • 3 Bedrooms • 2 Baths • Floor Size 1493 sq. ft.



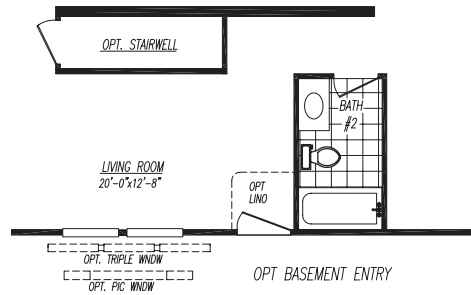
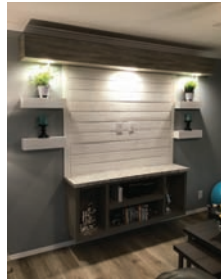
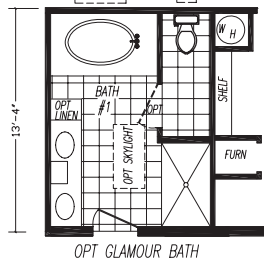
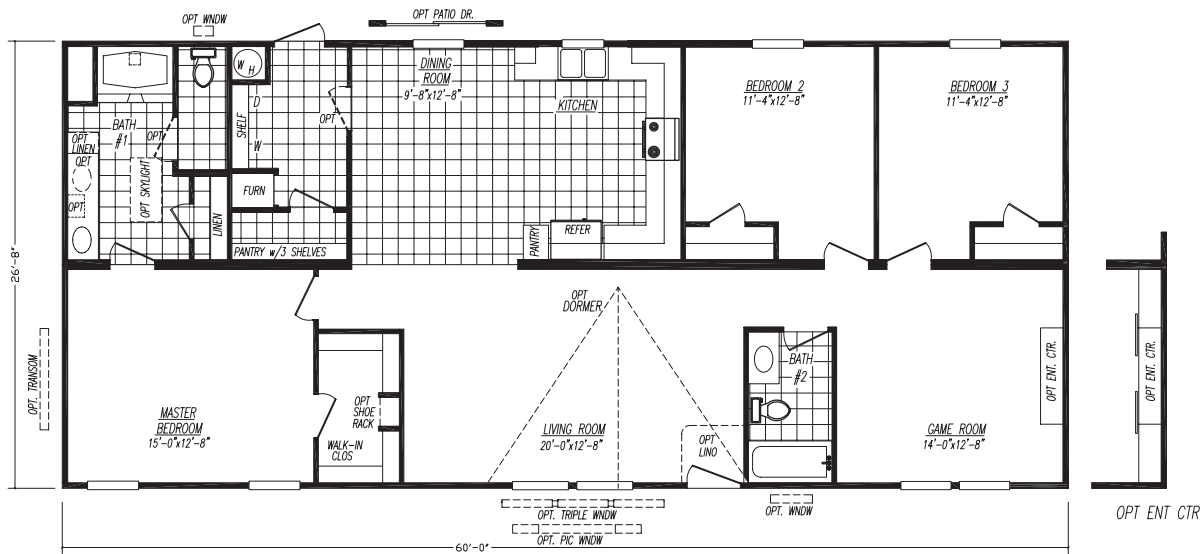
The Scottsville

Model 4584C • 4 Bedrooms • 2 Baths • Floor Size 1547 sq. ft.



The Homestead

Model 4603CD • 3 Bedrooms • 2 Baths • Floor Size 1600 sq. ft.

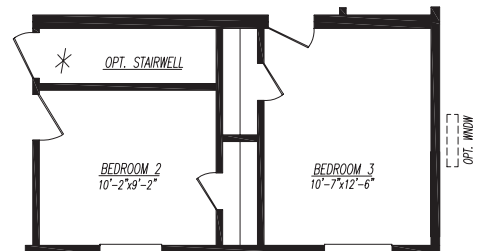
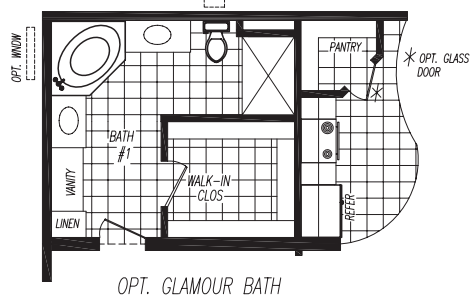
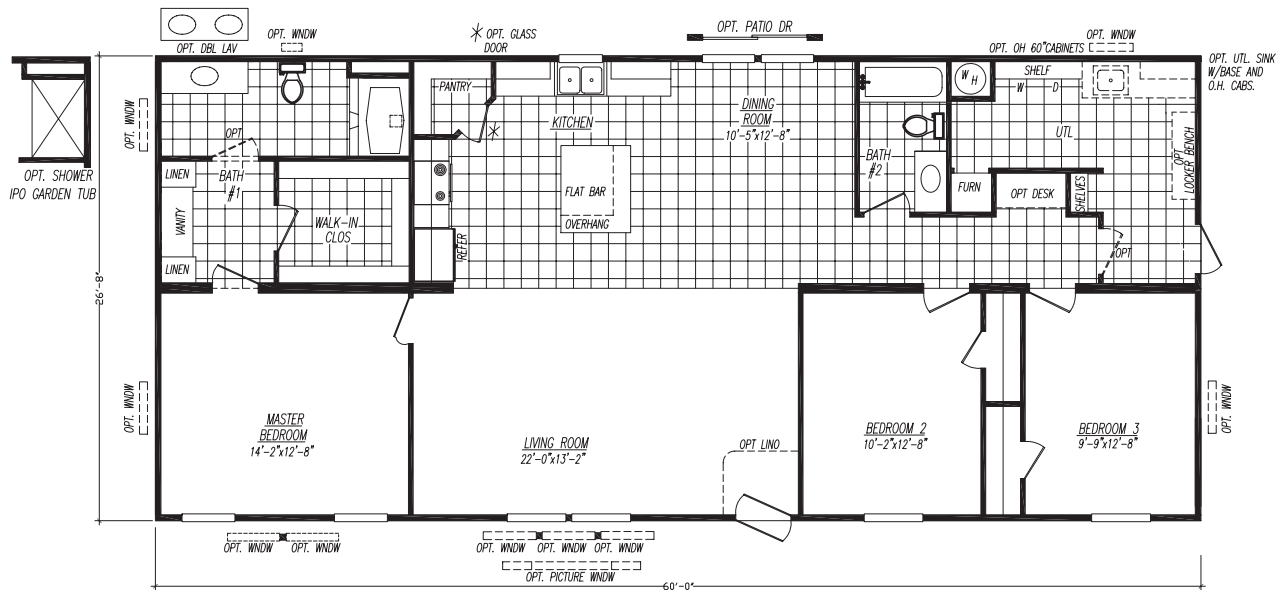


NEW
MODEL
2020

11

The Colorado

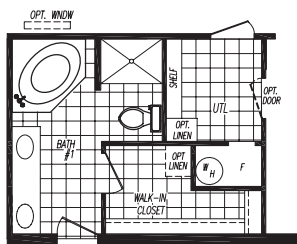
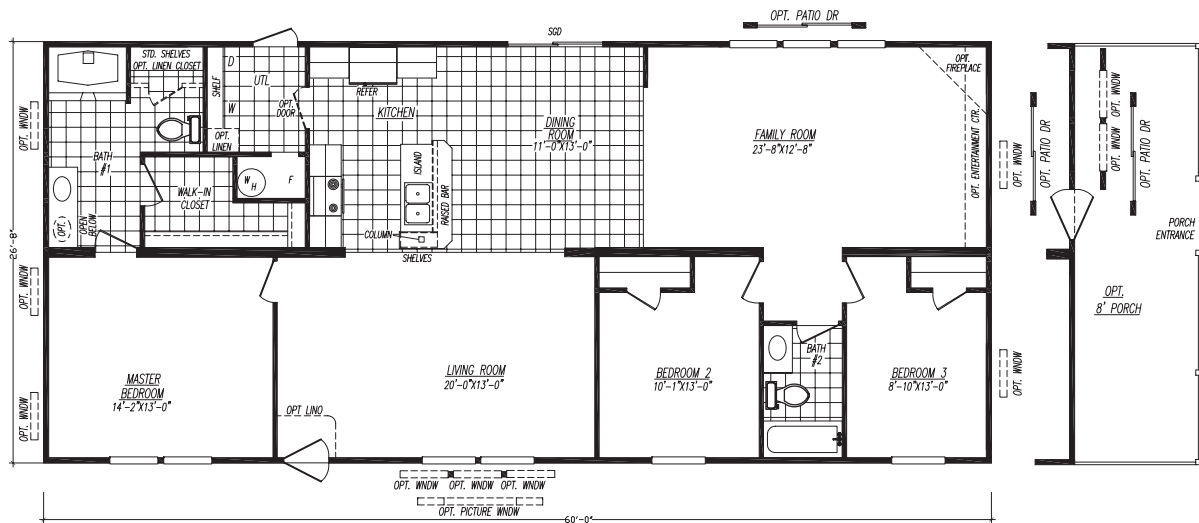
Model 4603GT • 3 Bedrooms • 2 Baths • Floor Size 1600 sq. ft.



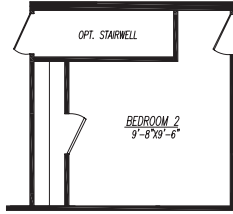
* OPT. STAIRWELL NOT AVAILABLE W/OPT 5/12

The Voyager

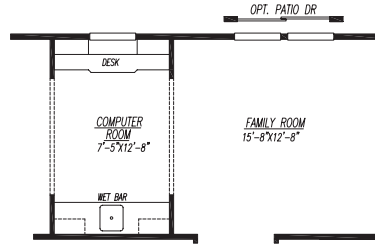
Model 4603S-M • 3 Bedrooms • 2 Baths • Floor Size 1600 sq. ft.



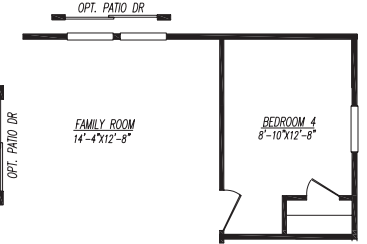
OPT. GLAMOUR BATH



OPT. BASEMENT ENTRY



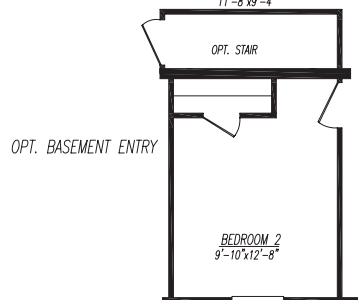
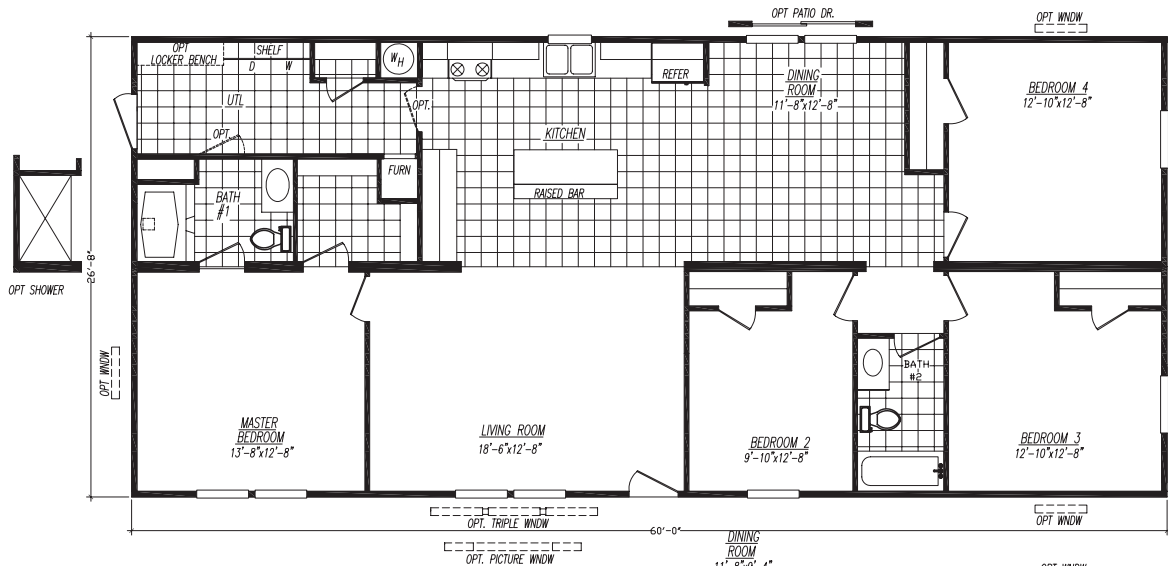
OPT. COMPUTER ROOM
W/WET BAR



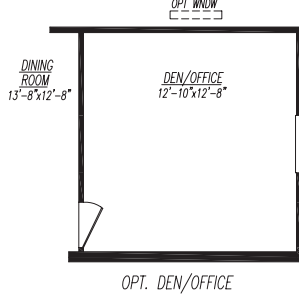
OPT. BEDROOM #4

The Summit

Model 4604A • 4 Bedrooms • 2 Baths • Floor Size 1600 sq. ft.



OPT. BASEMENT ENTRY



OPT. DEN/OFFICE

The Forestville

Model 4623D • 3 Bedrooms • 2 Baths • Floor Size 1653 sq. ft.



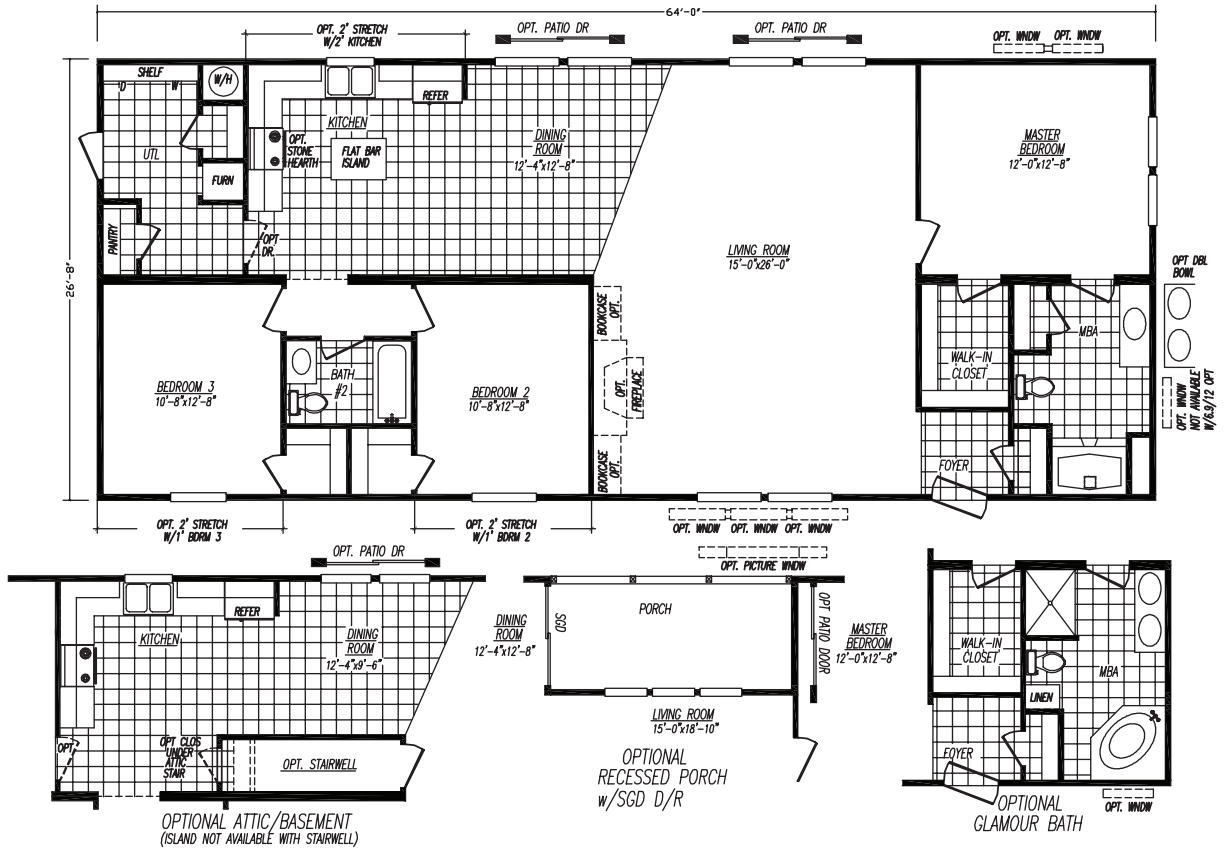
The Acadia

Model 4643A • 3 Bedrooms • 2 Baths • Floor Size 1707 sq. ft.



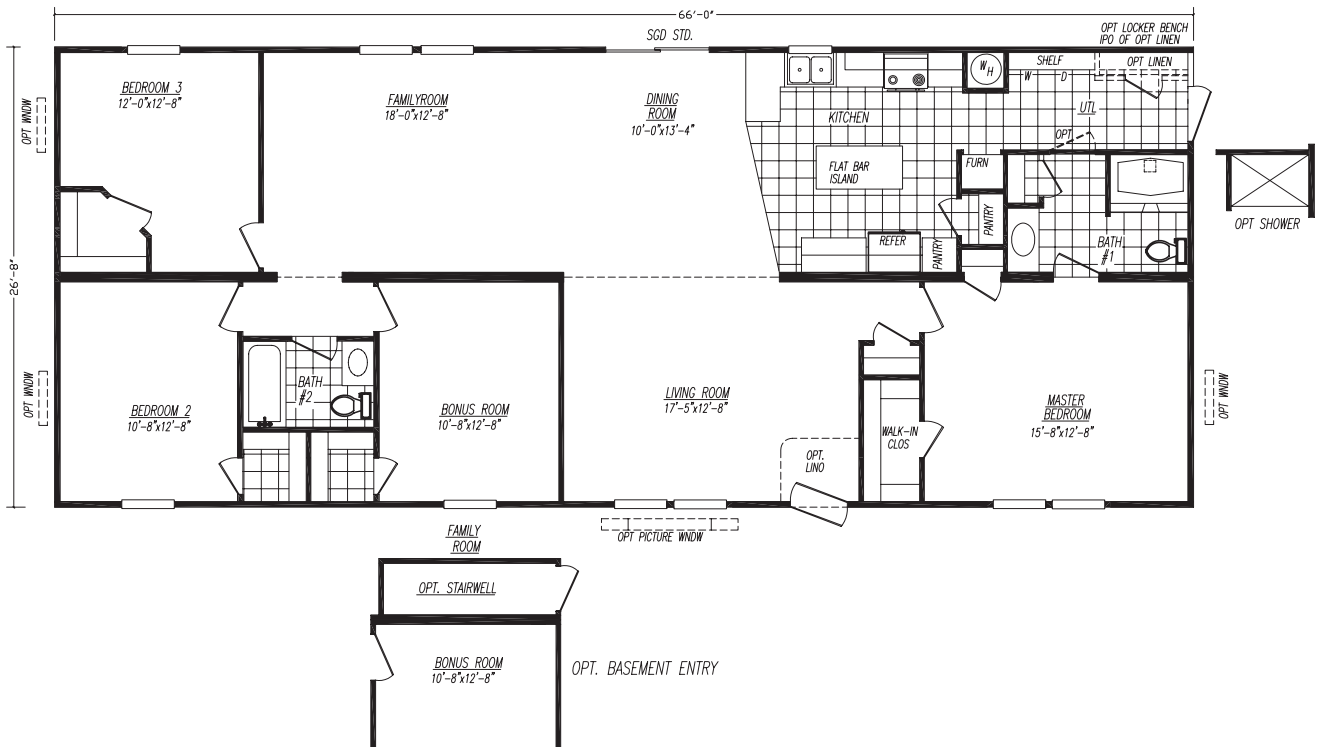
The Waldon

Model 4643P • 3 Bedrooms • 2 Baths • Floor Size 1707 sq. ft.



The Eagle

Model 4663B • 3/4 Bedrooms • 2 Baths • Floor Size 1760 sq. ft.



The Boone

Model 4683B • 3 Bedrooms • 2 Baths • Floor Size 1813 sq. ft.



15

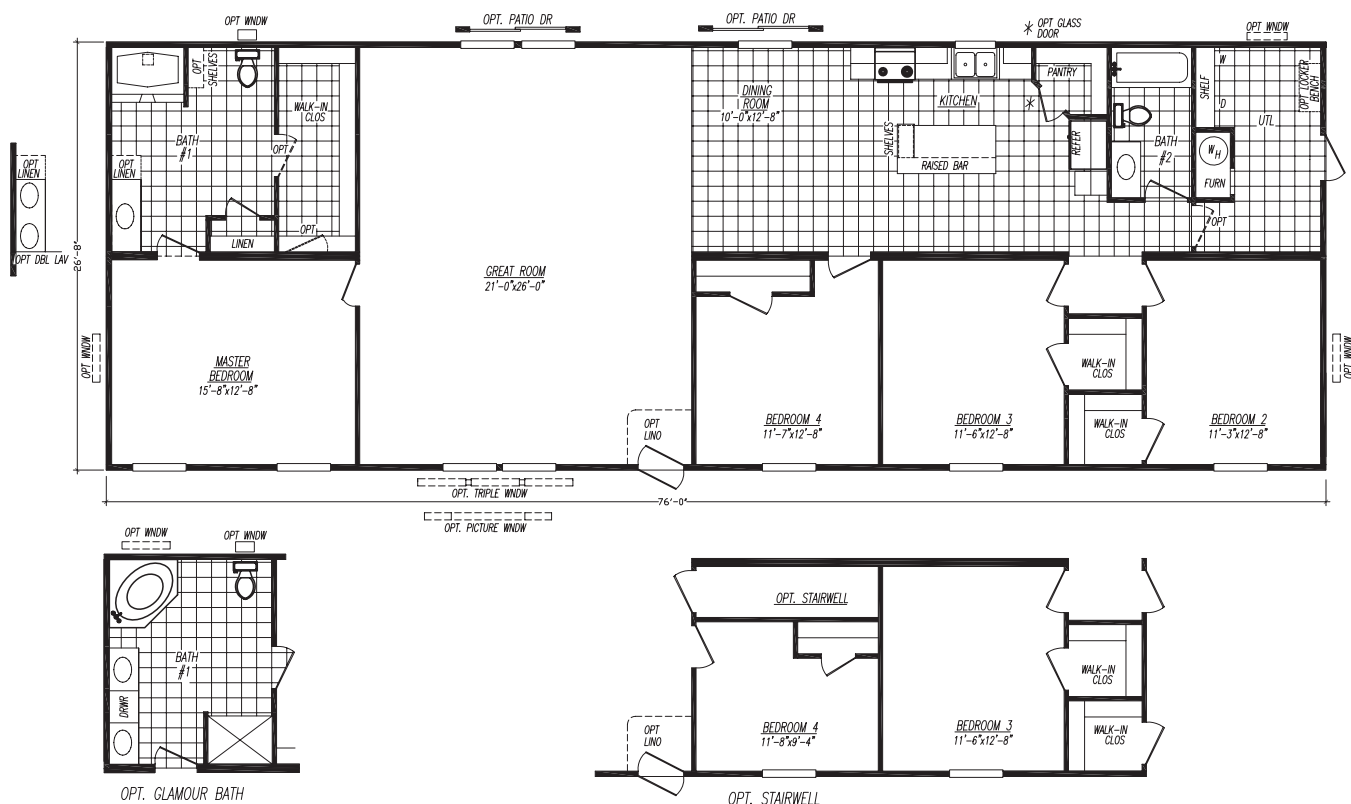
The Endeavor

Model 4683M • 3 Bedrooms • 2 Baths • Floor Size 1813 sq. ft.



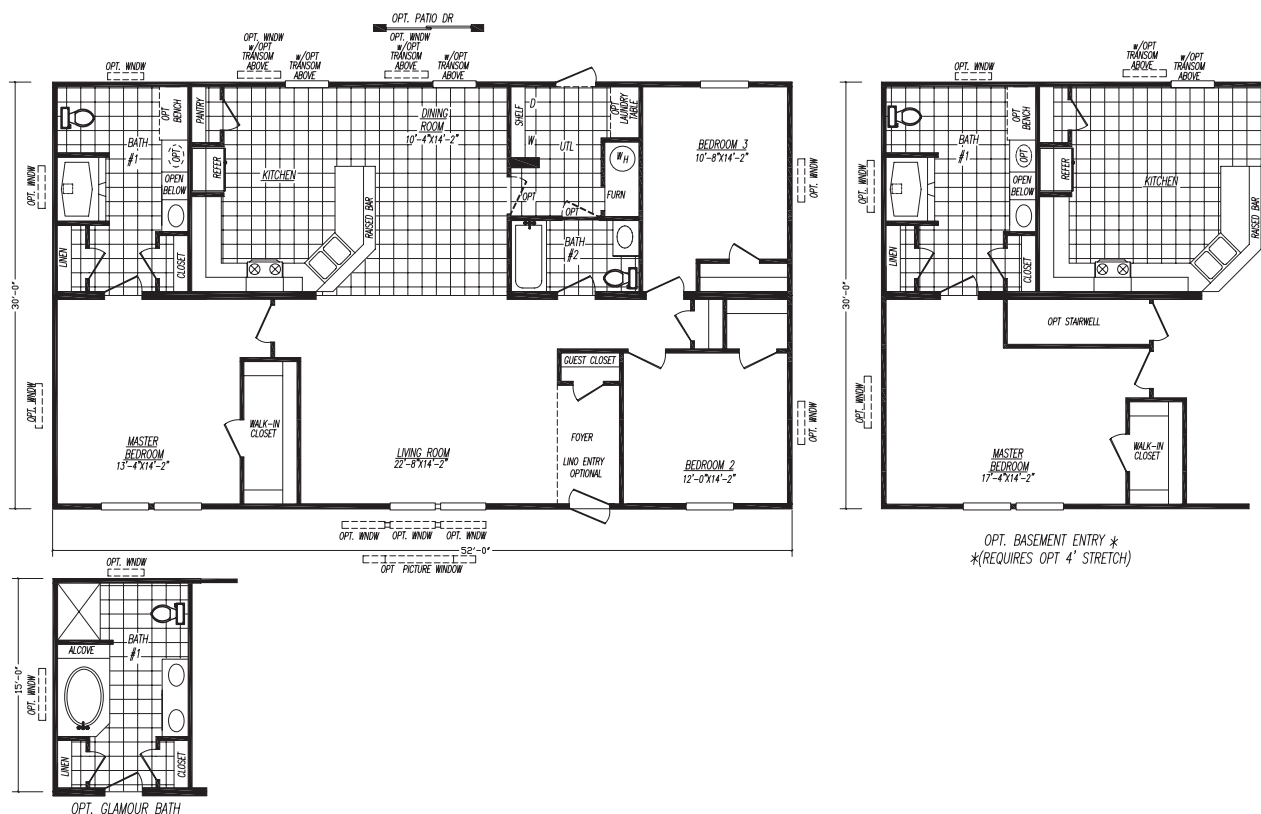
The Pines

Model 4764K • 4 Bedrooms • 2 Baths • Floor Size 2027 sq. ft.



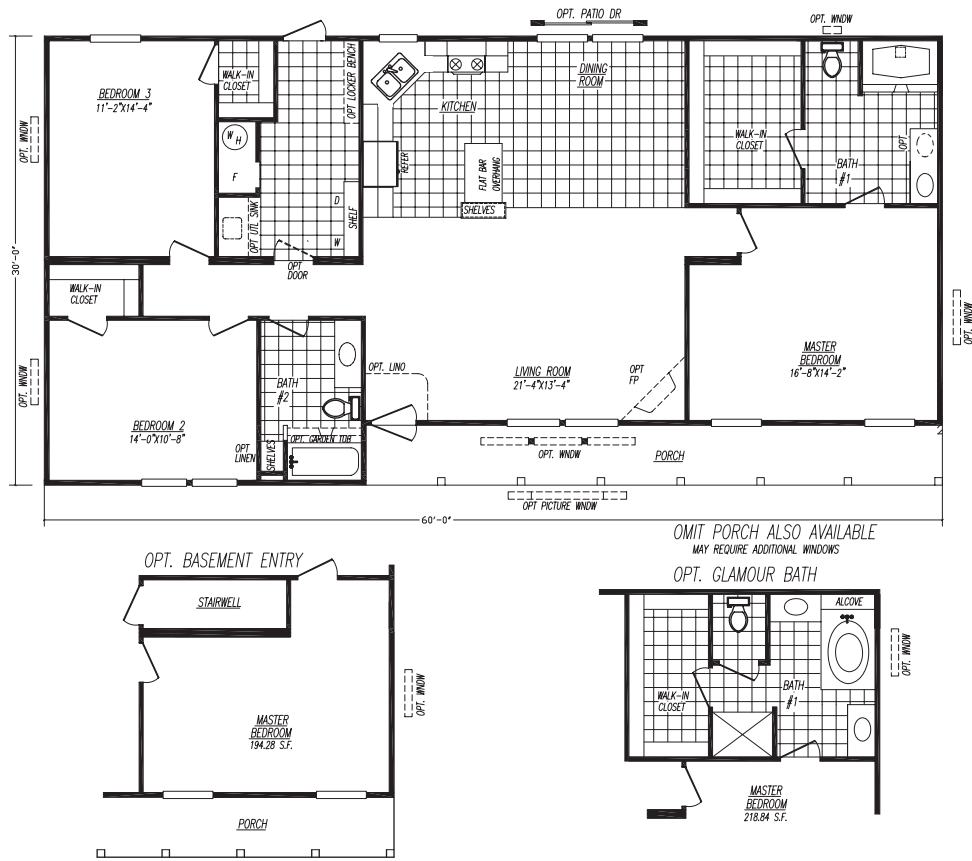
The Enterprise

Model 0523H • 3 Bedrooms • 2 Baths • Floor Size 1560 sq. ft.



The Plantation

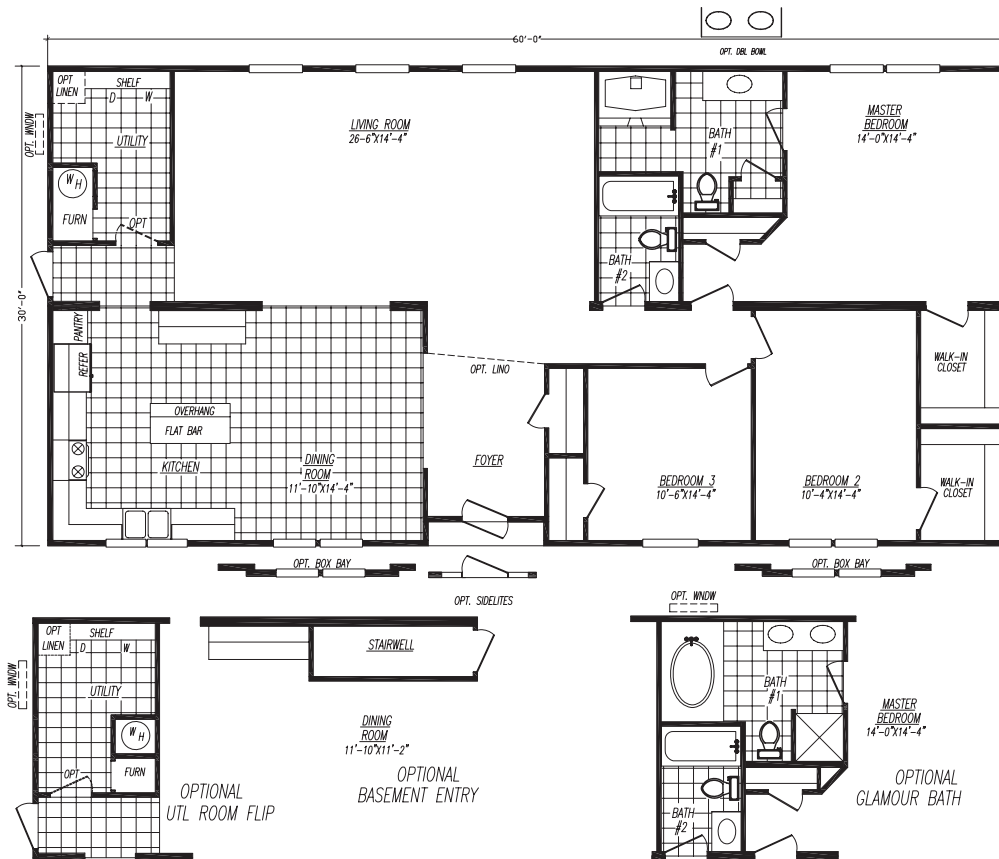
Model 0603M • 3 Bedrooms • 2 Baths • Floor Size 1800 sq. ft.



17

The Huntington

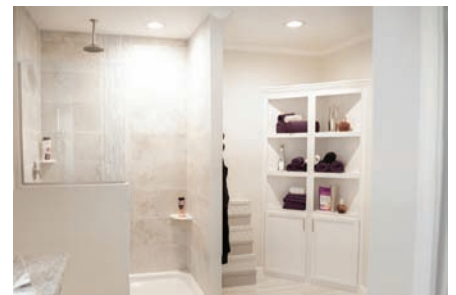
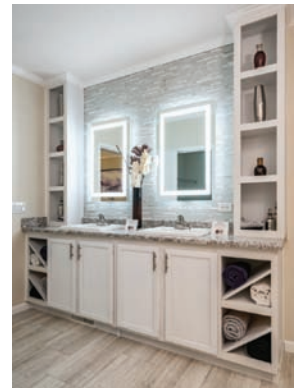
Model 0603P • 3 Bedrooms • 2 Baths • Floor Size 1800 sq. ft.



Model 0643FF • 3 Bedrooms • 2 Baths • Floor Size 1920 sq. ft.

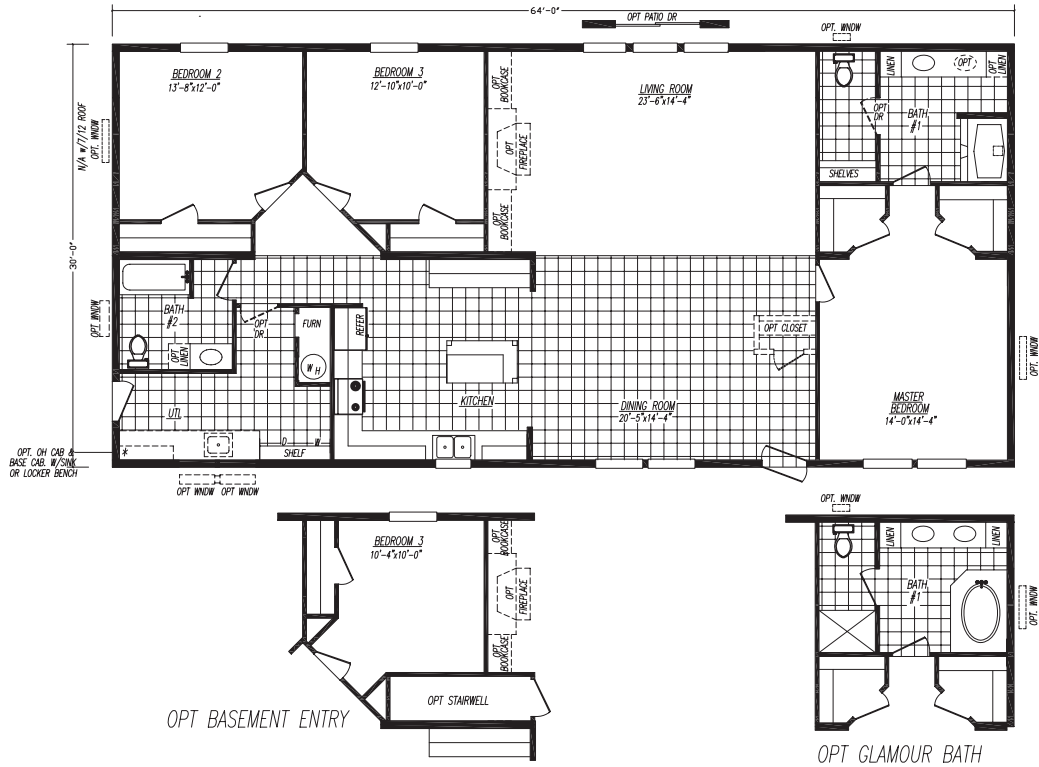


These are actual photos of the Cambridge



The Red Rock

Model 0643T • 3 Bedrooms • 2 Baths • Floor Size 1920 sq. ft.



19

The Graylock

Model 0684F • 4 Bedrooms • 2 Baths • Floor Size 2040 sq. ft.



W/OPT GLAMOUR BATH, OPT STAIRWELL SHOWN

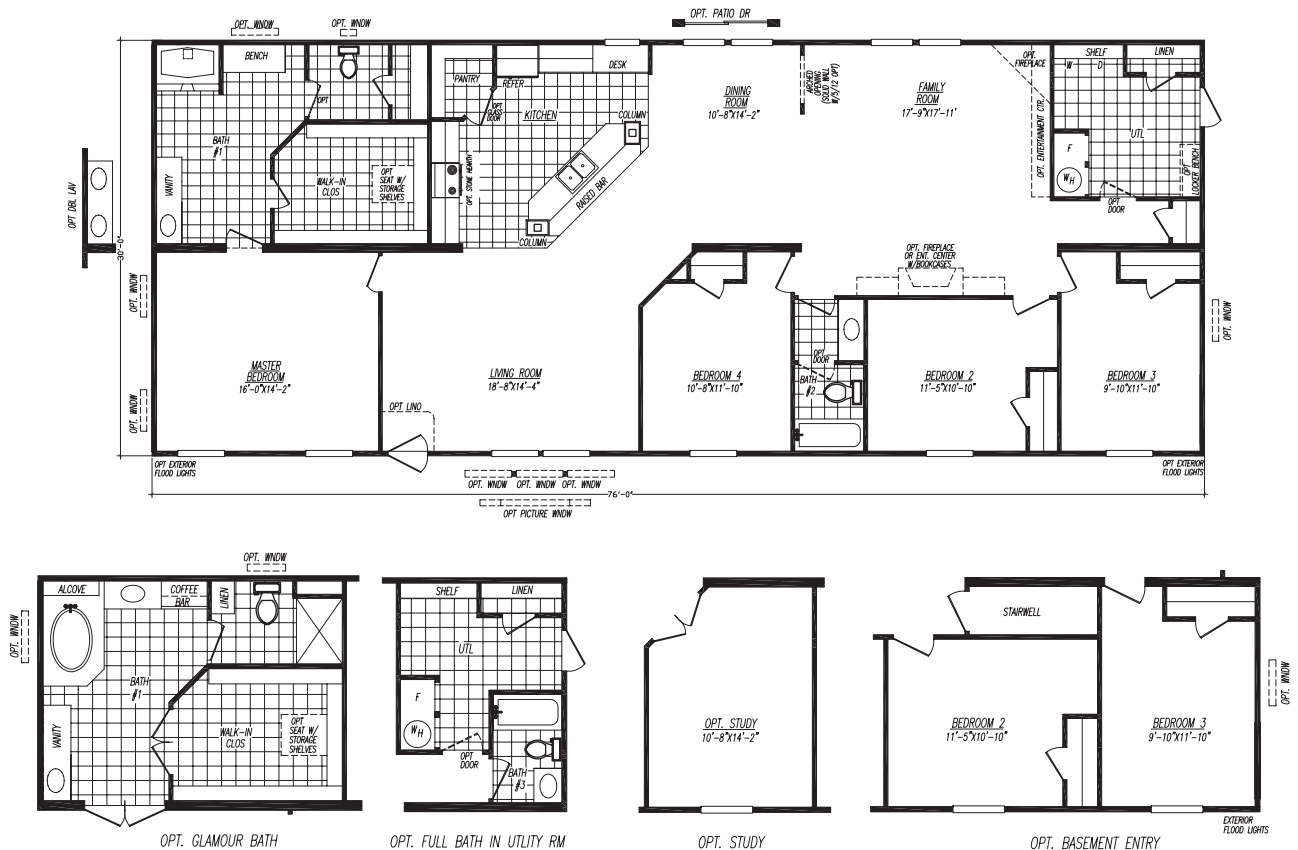
The *Mohican*

Model 0763C • 3 Bedrooms • 2 Baths • Floor Size 2280 sq. ft.



The Stone Mountain

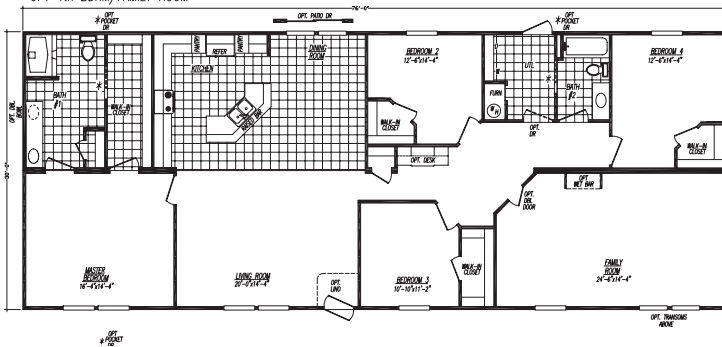
Model 0764L • 4 Bedrooms • 2 Baths • Floor Size 2280 sq. ft.



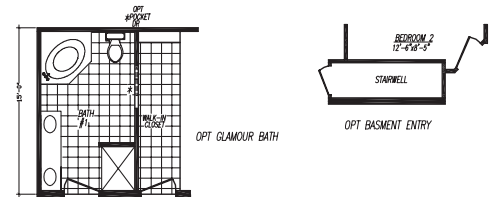
Model 0764R • 4 Bedrooms • 2 Baths • Floor Size 2280 sq. ft.



OPT 4th BDRM/FAMILY ROOM

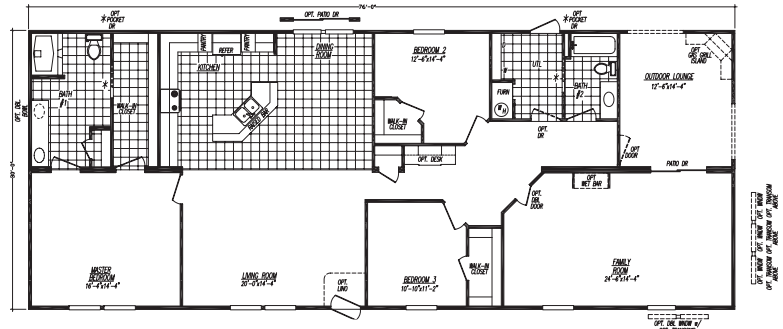


Additional options available on any of the above floorplans

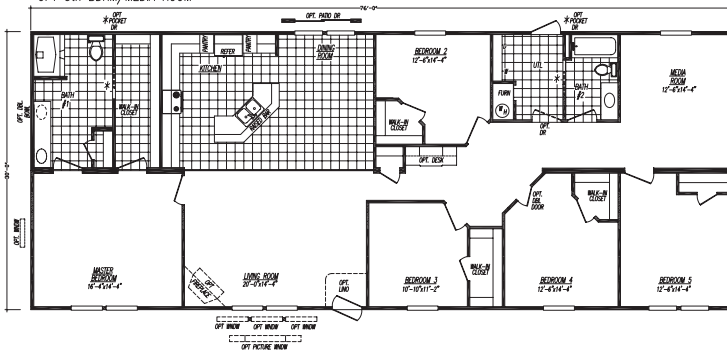


21

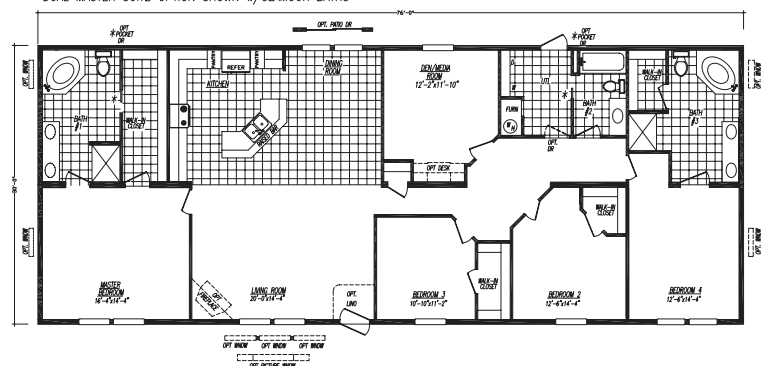
OPT OUTDOOR LOUNGE & FAMILY ROOM



OPT 5th BDRM/MEDIA ROOM

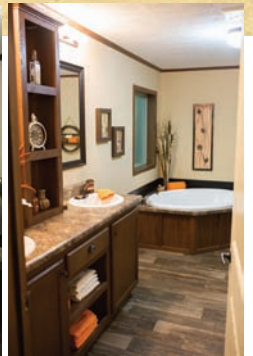


DUAL MASTER SUITE OPTION SHOWN w/GLAMOUR BATHS



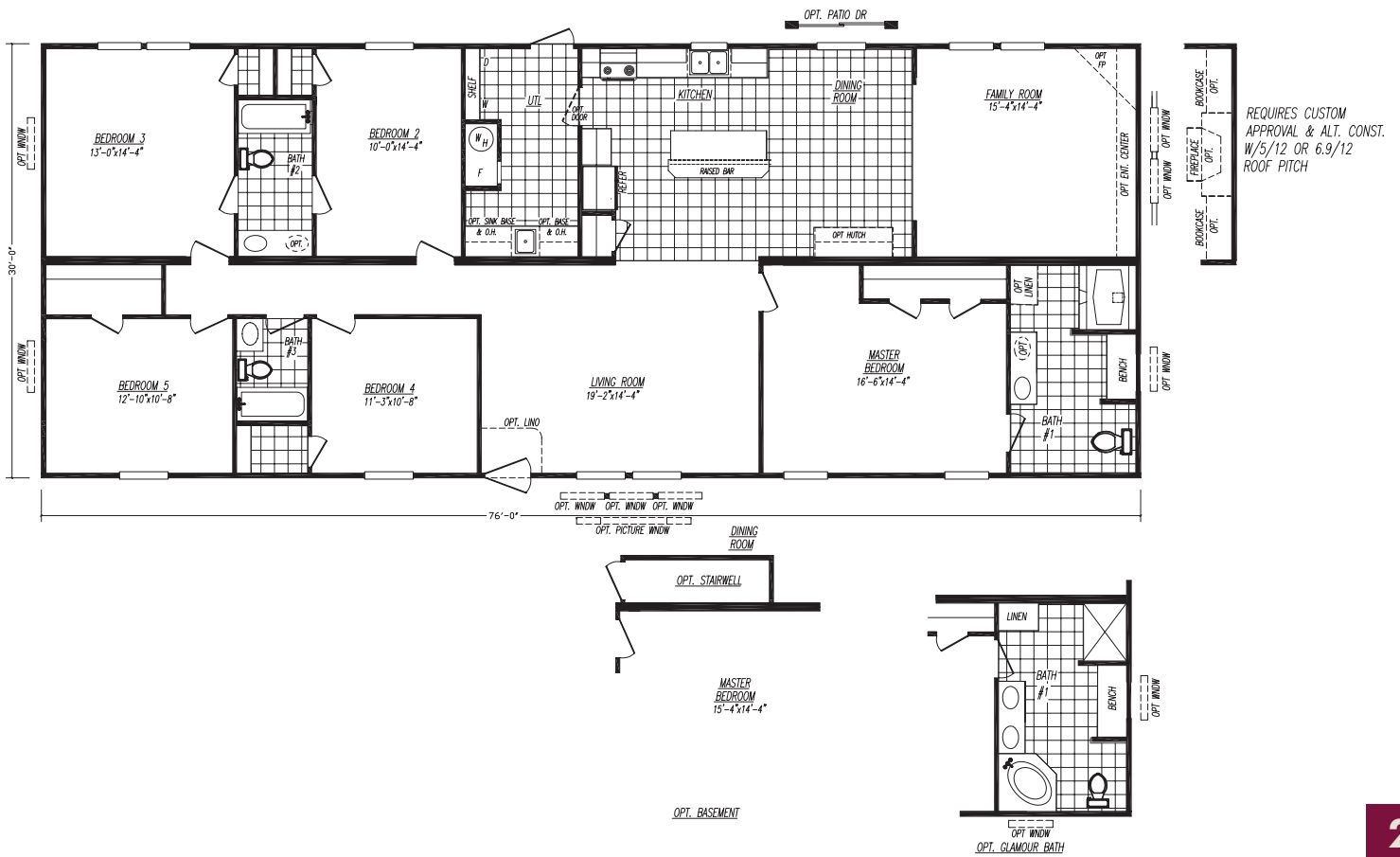
The Majestic

Model 0764S • 4 Bedrooms • 2 Baths • Floor Size 2280 sq. ft.



Model 0765M • 5 Bedrooms • 3 Baths • Floor Size 2280 sq. ft.

Model 0765M • 5 Bedrooms • 3 Baths • Floor Size 2280 sq. ft.



The Mojave Series Standard Features



Exterior Standards

Thermal Zone III Construction
Nominal 3/12 Roof Pitch
R-28-11-11 Insulation
(Additional Windows, Doors & Stretches May Require Higher Insulation Values)
Vinyl Siding by "Georgia Pacific"
1/4" Backer Board Wrap under Vinyl Siding
25 year "CertainTeed" Fiberglass Shingles
7/16" OSB Roof Sheathing
Dead Bolt Locks at Front and Rear Keyed Alike
Vinyl Windows w/Grids All Models
Foam All Exterior Windows
38 x 82 RO 6 Panel Steel Front Door with Storm
34 x 82 RO Steel Outswing Rear Door (No Storm)
2x6 Floor Joists 16" O.C. (14' & 28' Wides)
2x8 Floor Joists 16" O.C. (16' & 32' Wides)
20 LB Roof Load
2x4 Exterior Walls 16" O.C.
94" Flat Ceilings - All Models
OSB Floor Decking
12" Raised Panel Shutters @ FDS Only (Sectionals)
12" Raised Panel Shutters @ FDS & Hitch End (SW Only)
Light Fixtures at All Exterior Doors
Full Length Chassis w/ Outriggers 96" O.C.
99.5" I-Beam Spread, Detachable Hitch



Interior Standards

Decor Selections
2" Plastic Mini-Blinds Throughout
Door Stop All 3 Sides
Blown Textured Ceiling
Vinyl Wall Panels Throughout
Flat Wrapped Moldings Throughout
16 oz. Plush Carpet "Shaw"
3/8" Rebond Carpet Pad
Ventilated "Closet Maid" Vinyl Closet Shelving
Carpet Installed in All Bedrooms
Glass Ceiling Lights
6 Panel White Interior Doors Throughout
3 Hinge Interior Doors

Because of continuous product improvements, specifications are subject to change without notice or obligation.



Electrical, Plumbing, & Heating

Smoke Detectors in Main Living Areas & All Bedrooms
200 AMP Service, Electric Furnace
40 Gallon Electric Water Heater
Exterior Electrical Receptacle (FDS)
Copper Wiring, PEX Plumbing
Conventional Receptacles & Switches
Whole House Shut-Off Valve Near Water Heater
Water Shut-Off Valves All Sinks & Commodes
Metal Heat Ducts
GFI Receptacles in Kitchen and Baths
Plumb & Wire for Washer & Dryer
Ventilated "Closet Maid" Vinyl Utility Shelf



Kitchen Standards

White Whirlpool Appliances
30" Free Standing Electric Range
18 C.F. Frost-Free Refrigerator
30" Power Range Hood
30" Overhead Cabinets
Raised Panel MDF Cabinet Doors
Concealed Cabinet Door Hinges
Bank of Drawers w/Residential Rails & Guides
Laminated Countertops
"Congoleum" Vinyl Flooring
Stainless Steel Kitchen Sink
Fixed Shelves in Overhead Cabinets
Shelf Above Refrigerator



Bath Standards

Tub Shower w/ Surround w/Metal Anti-Scald
Single Lever Faucet In Bathroom(S)
Laminated Countertops
Mirror Above Each Bathroom Sink
Power Exhaust Fans in All Baths
China "Water Saver" Commodes Both Baths
White Plastic Sink(s) w/Dual Knob Faucets
"Congoleum" Vinyl Flooring
Garden Tubs w/Surround Master Bath (MS where available)

**Select Models offered as State Code Modular's. Call your sales representative for model and state availability.
(Modular Standards WILL differ from HUD: Modular Floorplans offered may differ from HUD)**



ADVENTURE HOMES, LLC

1119 Fuller Drive • Garrett, IN 46738 • Ph: 877.510.1955

www.adventurehomes.net

February 2020